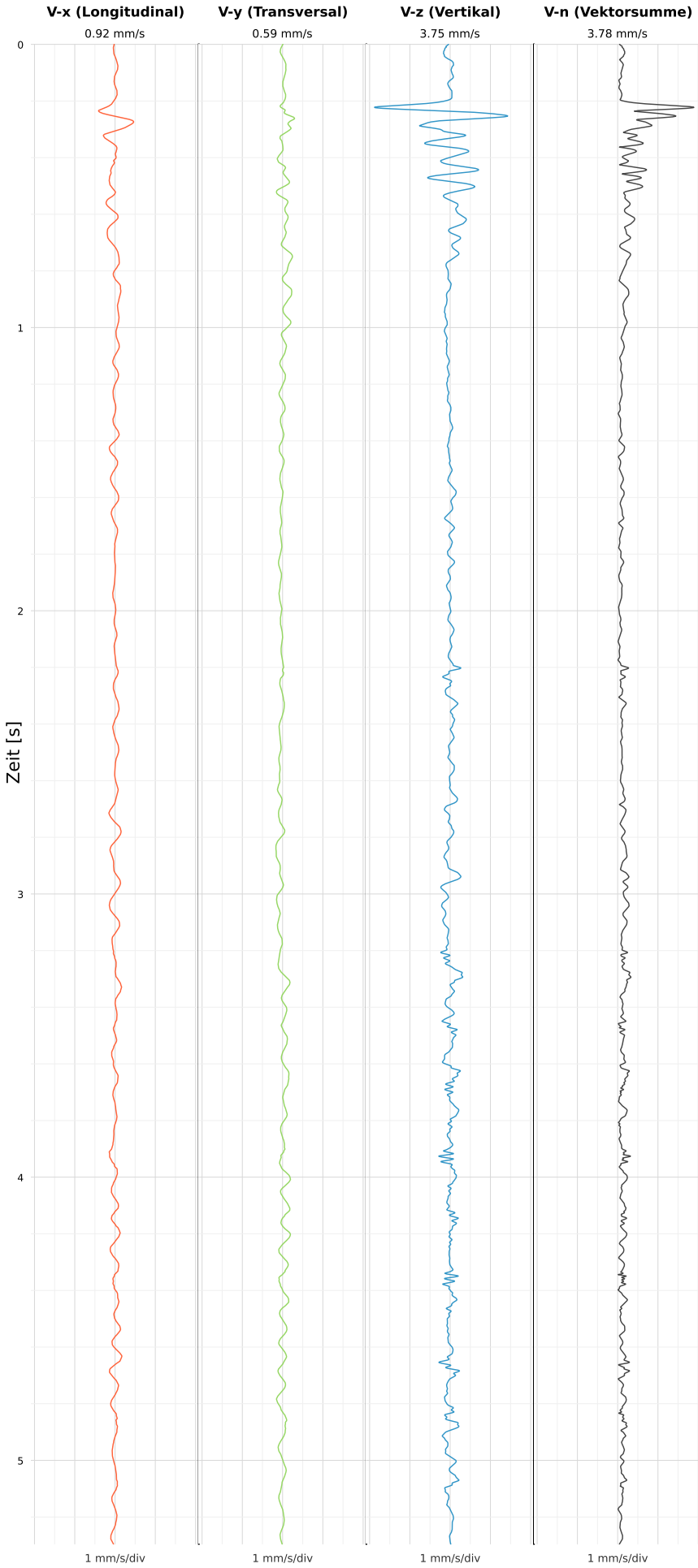


SCHWINGGESCHWINDIGKEIT



DATEI: 2493-PG4-12052026-112253_raw.csv

Aufzeichnungsdauer: 5.30 s | Abtastrate: 1000 Hz

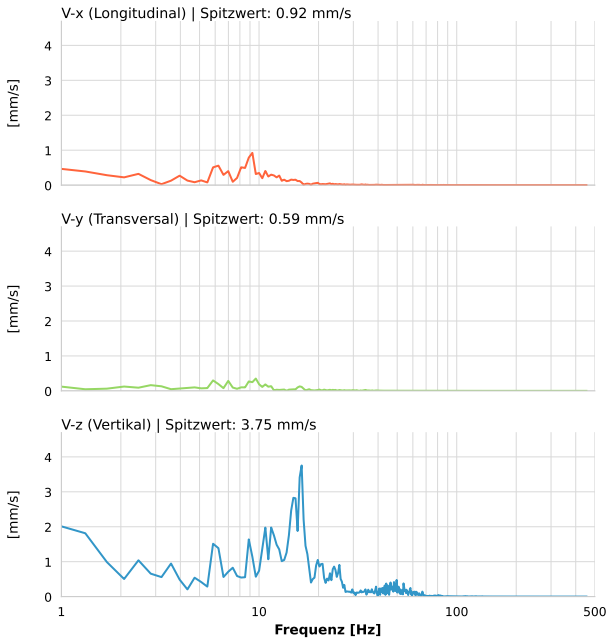
| | |
|------------------|--------------------------|
| Datum: | 12.05.2026 |
| Zeit: | 13:22:53 |
| Event-ID: | 2493-PG4-12052026-112253 |
| Kalibrier Datum: | 12.07.2025 |

Spitzwerte

| V-x (Longitudinal) | V-y (Transversal) | V-z (Vertikal) |
|--------------------|-------------------|------------------|
| 0.92 mm/s | 0.59 mm/s | 3.75 mm/s |
| 9.3 Hz | 0.2 Hz | 16.4 Hz |
| 18.47% von Limit | 11.89% von Limit | 56.82% von Limit |

V-n (Vektorsumme): 3.78 mm/s

SPEKTRALANALYSE - KOMPONENTEN FFT



| Kanal | Spitzwert | Spektrum 25% | Spektrum 50% | Spektrum 75% |
|-------|-----------|--------------|--------------|--------------|
| X | 0.92 mm/s | 5.9 Hz | 8.9 Hz | 12.7 Hz |
| Y | 0.59 mm/s | 4.0 Hz | 8.9 Hz | 15.7 Hz |
| Z | 3.75 mm/s | 10.4 Hz | 15.7 Hz | 23.6 Hz |

SPEKTRALANALYSE - FFT (DIN 4150-3)

