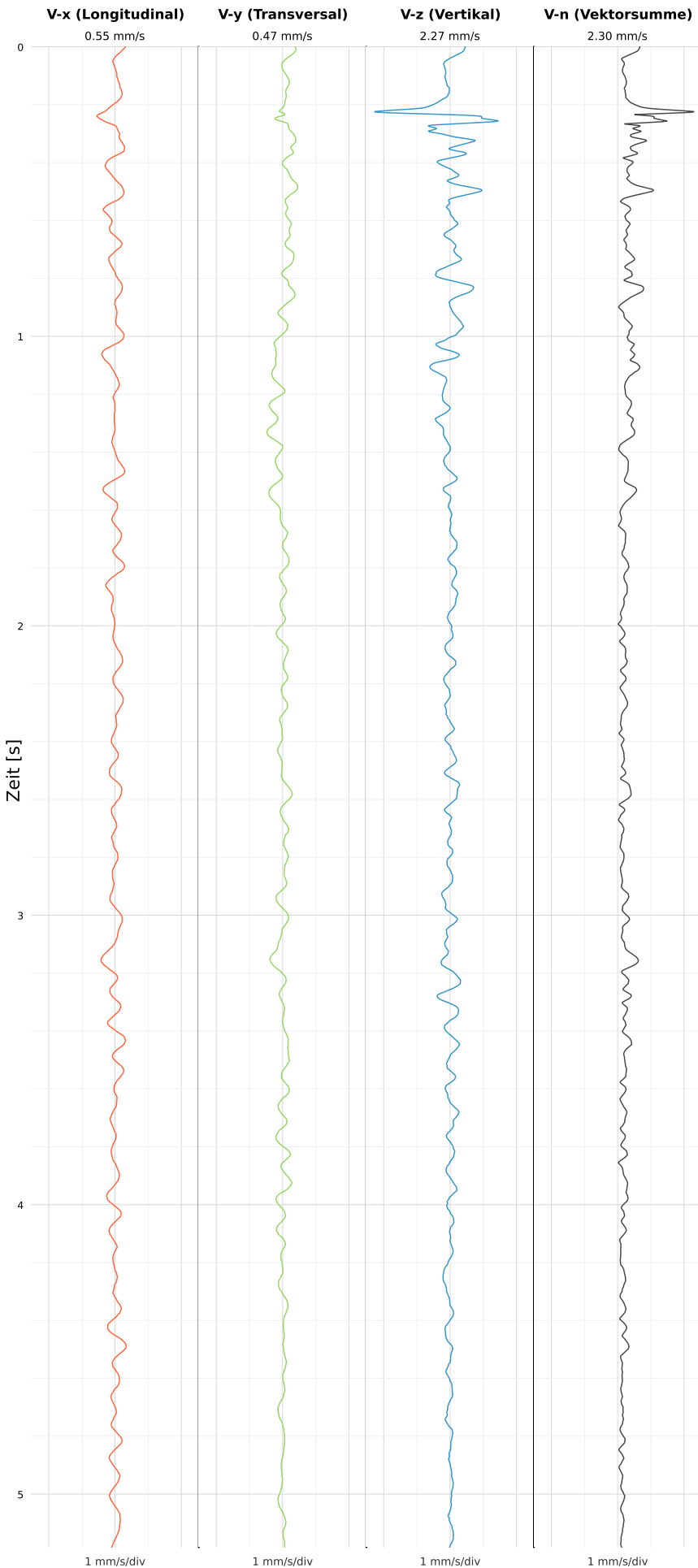


SCHWINGGESCHWINDIGKEIT



DATEI: 2493-PG4-12052026-102748_raw.csv

Aufzeichnungsdauer: 5.18 s | Abtastrate: 1000 Hz

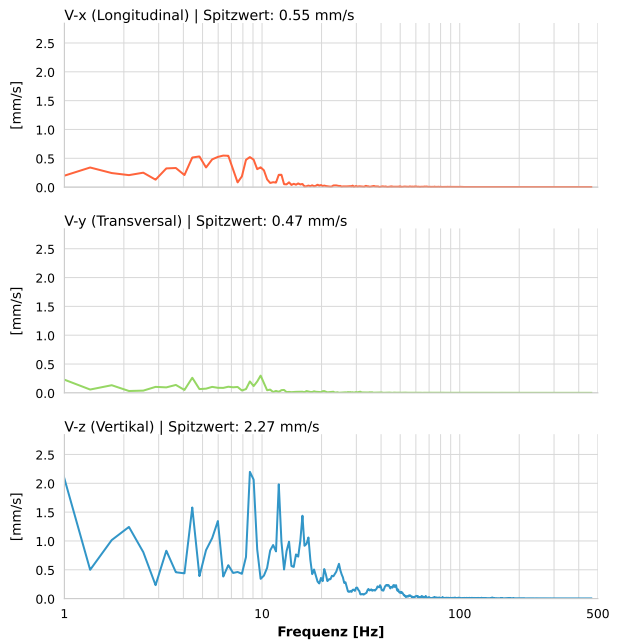
| | |
|------------------|--------------------------|
| Datum: | 12.05.2026 |
| Zeit: | 12:27:48 |
| Event-ID: | 2493-PG4-12052026-102748 |
| Kalibrier Datum: | 12.07.2025 |

Spitzwerte

| V-x (Longitudinal) | V-y (Transversal) | V-z (Vertikal) |
|--------------------|-------------------|------------------|
| 0.55 mm/s | 0.47 mm/s | 2.27 mm/s |
| 6.2 Hz | 0.6 Hz | 1.0 Hz |
| 10.94% von Limit | 9.45% von Limit | 45.49% von Limit |

V-n (Vektorsumme): 2.30 mm/s

SPEKTRALANALYSE - KOMPONENTEN FFT



| Kanal | Spitzwert | Spektrum 25% | Spektrum 50% | Spektrum 75% |
|-------|-----------|--------------|--------------|--------------|
| X | 0.55 mm/s | 5.2 Hz | 8.3 Hz | 17.6 Hz |
| Y | 0.47 mm/s | 3.3 Hz | 8.7 Hz | 17.9 Hz |
| Z | 2.27 mm/s | 7.9 Hz | 14.9 Hz | 27.6 Hz |

SPEKTRALANALYSE - FFT (DIN 4150-3)

