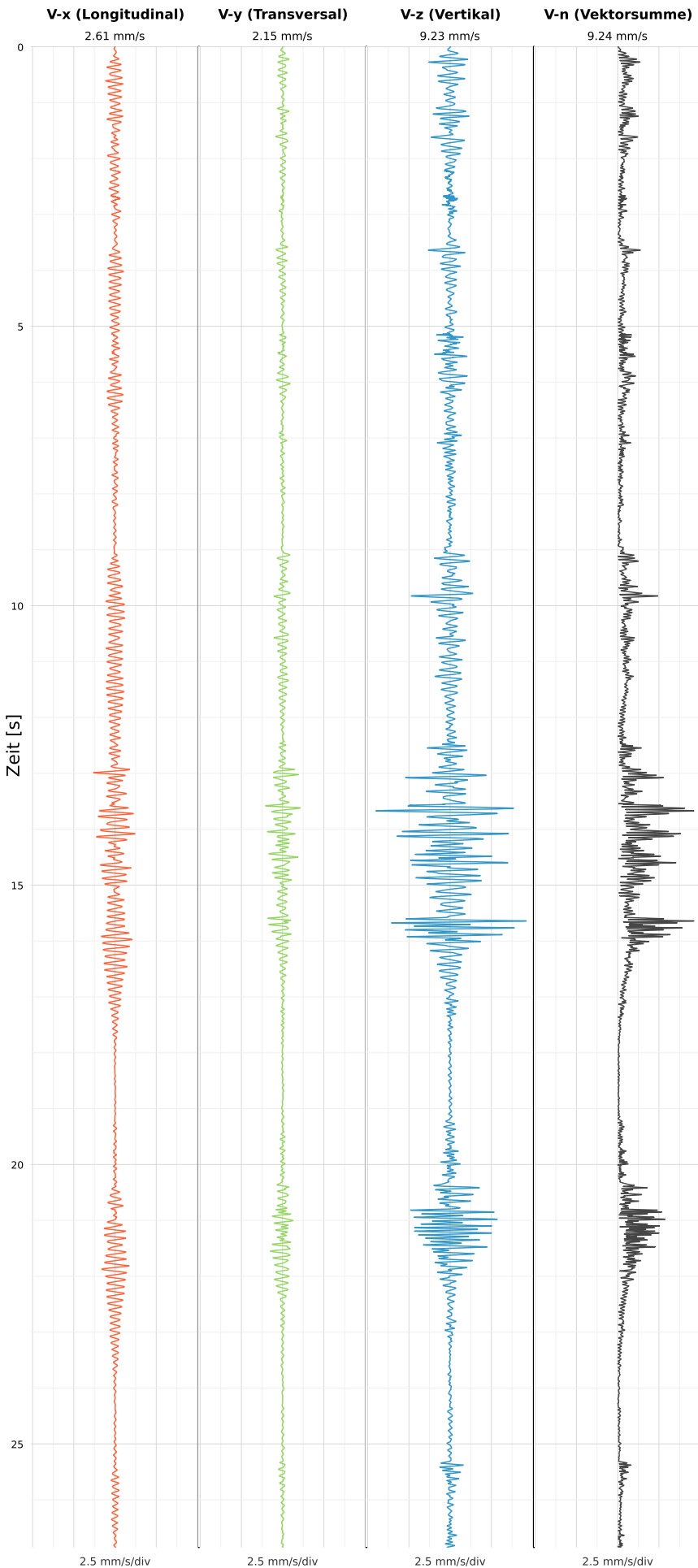


## SCHWINGGESCHWINDIGKEIT



**DATEI: 2493-PG4-12052026-070458\_raw.csv**

Aufzeichnungsdauer: 26.85 s | Abtastrate: 1000 Hz

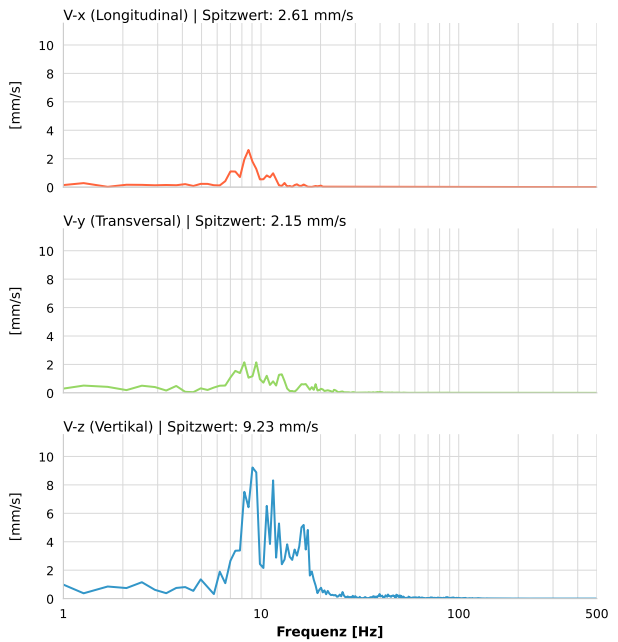
|                         |                          |
|-------------------------|--------------------------|
| <b>Datum:</b>           | 12.05.2026               |
| <b>Zeit:</b>            | 09:04:58                 |
| <b>Event-ID:</b>        | 2493-PG4-12052026-070458 |
| <b>Kalibrier Datum:</b> | 12.07.2025               |

### Spitzwerte

| V-x (Longitudinal) | V-y (Transversal) | V-z (Vertikal)    |
|--------------------|-------------------|-------------------|
| 2.61 mm/s          | 2.15 mm/s         | 9.23 mm/s         |
| 8.5 Hz             | 8.4 Hz            | 8.4 Hz            |
| 52.28% von Limit   | 43.04% von Limit  | 184.52% von Limit |

**V-n (Vektorsumme):** 9.24 mm/s

## SPEKTRALANALYSE - KOMPONENTEN FFT



| Kanal | Spitzwert | Spektrum 25% | Spektrum 50% | Spektrum 75% |
|-------|-----------|--------------|--------------|--------------|
| X     | 2.61 mm/s | 7.8 Hz       | 9.1 Hz       | 11.5 Hz      |
| Y     | 2.15 mm/s | 7.8 Hz       | 10.3 Hz      | 16.0 Hz      |
| Z     | 9.23 mm/s | 9.1 Hz       | 11.9 Hz      | 16.4 Hz      |

## SPEKTRALANALYSE - FFT (DIN 4150-3)

