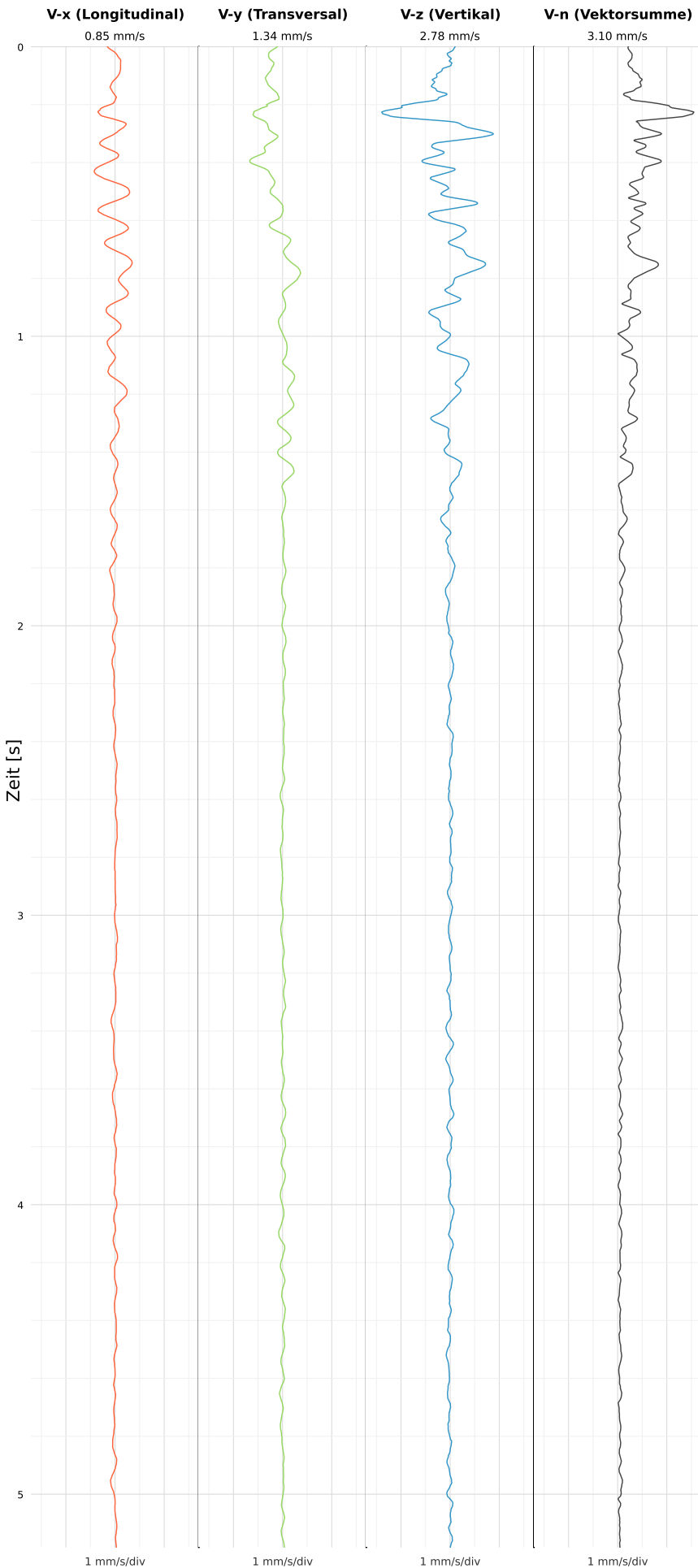


SCHWINGGESCHWINDIGKEIT



DATEI: 2493-PG4-12052026-070231\_raw.csv

Aufzeichnungsdauer: 5.18 s | Abtastrate: 1000 Hz

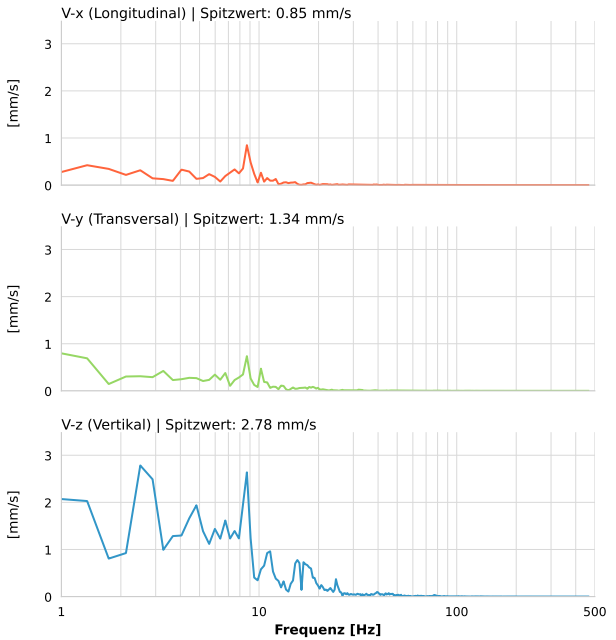
|                  |                          |
|------------------|--------------------------|
| Datum:           | 12.05.2026               |
| Zeit:            | 09:02:31                 |
| Event-ID:        | 2493-PG4-12052026-070231 |
| Kalibrier Datum: | 12.07.2025               |

Spitzwerte

| V-x (Longitudinal) | V-y (Transversal) | V-z (Vertikal)   |
|--------------------|-------------------|------------------|
| 0.85 mm/s          | 1.34 mm/s         | 2.78 mm/s        |
| 8.7 Hz             | 0.4 Hz            | 2.7 Hz           |
| 16.95% von Limit   | 26.77% von Limit  | 55.66% von Limit |

V-n (Vektorsumme): 3.10 mm/s

SPEKTRALANALYSE - KOMPONENTEN FFT



| Kanal | Spitzwert | Spektrum 25% | Spektrum 50% | Spektrum 75% |
|-------|-----------|--------------|--------------|--------------|
| X     | 0.85 mm/s | 4.1 Hz       | 8.3 Hz       | 13.3 Hz      |
| Y     | 1.34 mm/s | 1.4 Hz       | 6.0 Hz       | 11.0 Hz      |
| Z     | 2.78 mm/s | 3.3 Hz       | 7.5 Hz       | 15.2 Hz      |

SPEKTRALANALYSE - FFT (DIN 4150-3)

