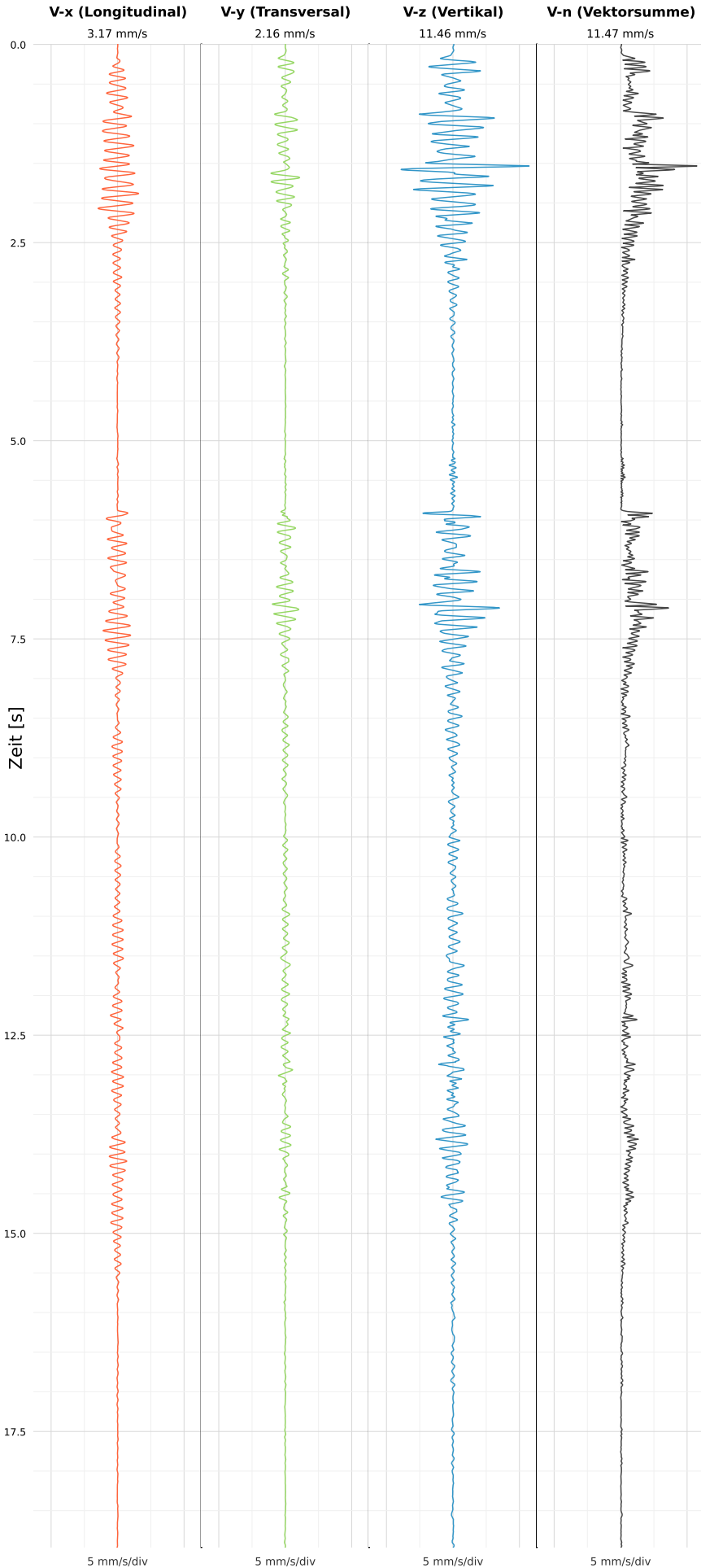


SCHWINGGESCHWINDIGKEIT



DATEI: 2493-PG4-12052026-065838\_raw.csv

Aufzeichnungsdauer: 18.96 s | Abtastrate: 1000 Hz

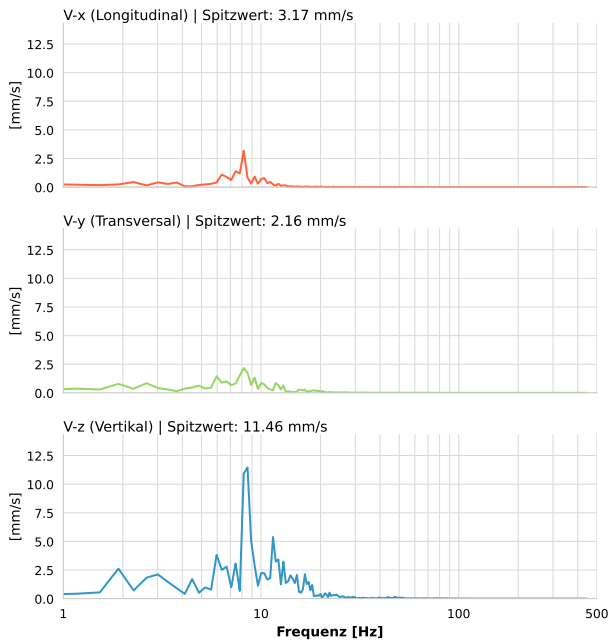
|                  |                          |
|------------------|--------------------------|
| Datum:           | 12.05.2026               |
| Zeit:            | 08:58:38                 |
| Event-ID:        | 2493-PG4-12052026-065838 |
| Kalibrier Datum: | 12.07.2025               |

Spitzwerte

| V-x (Longitudinal) | V-y (Transversal) | V-z (Vertikal)    |
|--------------------|-------------------|-------------------|
| 3.17 mm/s          | 2.16 mm/s         | 11.46 mm/s        |
| 8.3 Hz             | 8.6 Hz            | 8.6 Hz            |
| 63.43% von Limit   | 43.26% von Limit  | 229.12% von Limit |

V-n (Vektorsumme): 11.47 mm/s

SPEKTRALANALYSE - KOMPONENTEN FFT



| Kanal | Spitzwert  | Spektrum 25% | Spektrum 50% | Spektrum 75% |
|-------|------------|--------------|--------------|--------------|
| X     | 3.17 mm/s  | 6.3 Hz       | 8.2 Hz       | 10.0 Hz      |
| Y     | 2.16 mm/s  | 6.0 Hz       | 8.2 Hz       | 11.9 Hz      |
| Z     | 11.46 mm/s | 7.8 Hz       | 9.3 Hz       | 13.7 Hz      |

SPEKTRALANALYSE - FFT (DIN 4150-3)

