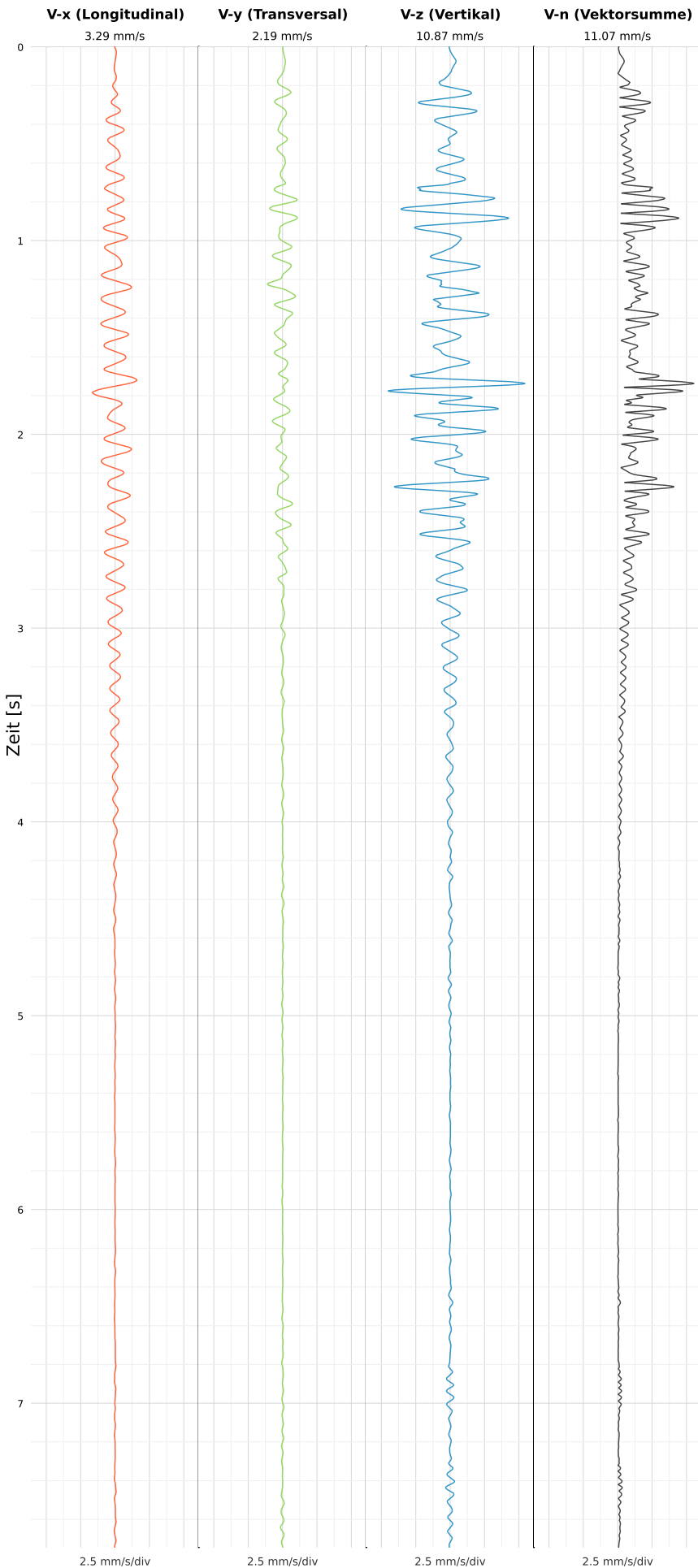


SCHWINGGESCHWINDIGKEIT



DATEI: 2493-PG4-12052026-065237_raw.csv

Aufzeichnungsdauer: 7.74 s | Abtastrate: 1000 Hz

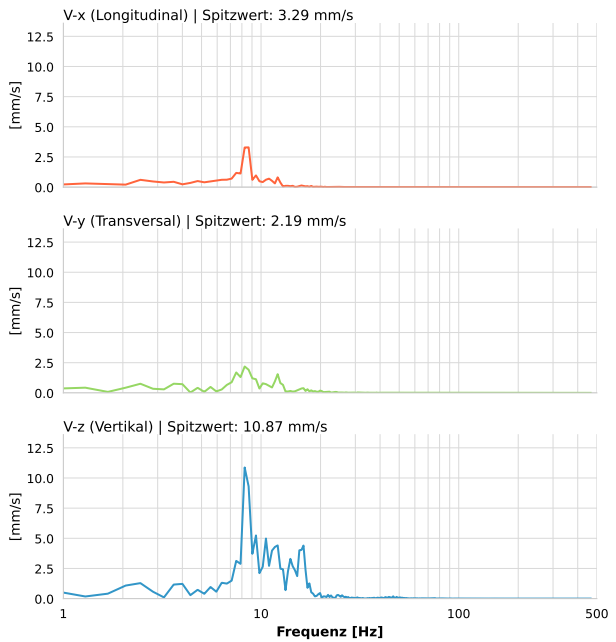
| | |
|------------------|--------------------------|
| Datum: | 12.05.2026 |
| Zeit: | 08:52:37 |
| Event-ID: | 2493-PG4-12052026-065237 |
| Kalibrier Datum: | 12.07.2025 |

Spitzwerte

| V-x (Longitudinal) | V-y (Transversal) | V-z (Vertikal) |
|--------------------|-------------------|-------------------|
| 3.29 mm/s | 2.19 mm/s | 10.87 mm/s |
| 8.5 Hz | 8.4 Hz | 8.5 Hz |
| 65.89% von Limit | 43.71% von Limit | 217.44% von Limit |

V-n (Vektorsumme): 11.07 mm/s

SPEKTRALANALYSE - KOMPONENTEN FFT



| Kanal | Spitzwert | Spektrum 25% | Spektrum 50% | Spektrum 75% |
|-------|------------|--------------|--------------|--------------|
| X | 3.29 mm/s | 6.3 Hz | 8.3 Hz | 9.8 Hz |
| Y | 2.19 mm/s | 7.1 Hz | 8.7 Hz | 12.1 Hz |
| Z | 10.87 mm/s | 8.3 Hz | 11.0 Hz | 15.2 Hz |

SPEKTRALANALYSE - FFT (DIN 4150-3)

