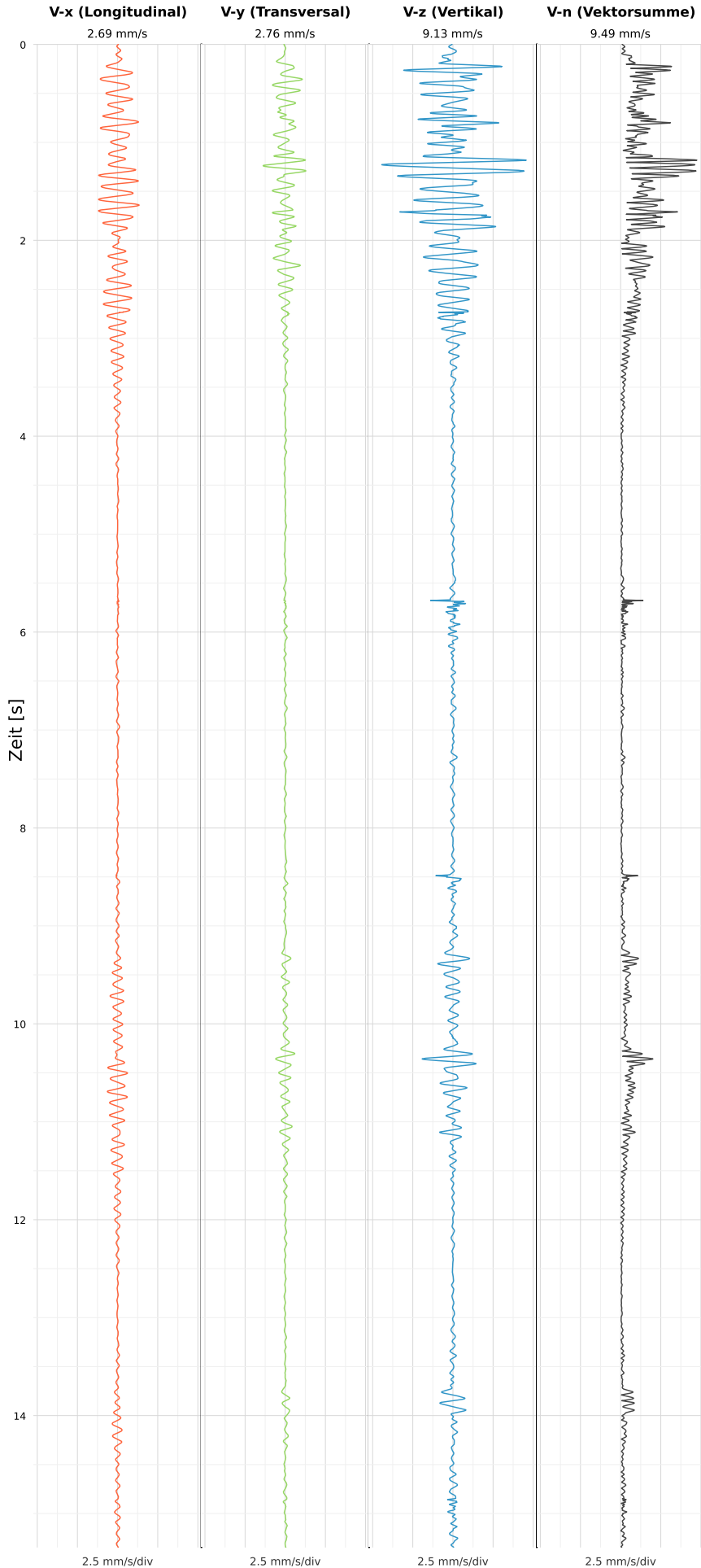


SCHWINGGESCHWINDIGKEIT



DATEI: 2493-PG4-12052026-065142_raw.csv

Aufzeichnungsdauer: 15.34 s | Abtastrate: 1000 Hz

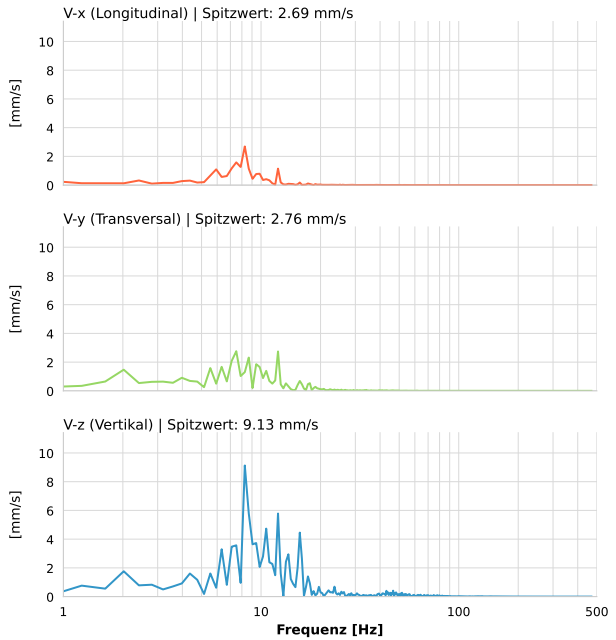
| | |
|------------------|--------------------------|
| Datum: | 12.05.2026 |
| Zeit: | 08:51:42 |
| Event-ID: | 2493-PG4-12052026-065142 |
| Kalibrier Datum: | 12.07.2025 |

Spitzwerte

| V-x (Longitudinal) | V-y (Transversal) | V-z (Vertikal) |
|--------------------|-------------------|-------------------|
| 2.69 mm/s | 2.76 mm/s | 9.13 mm/s |
| 8.3 Hz | 8.3 Hz | 8.3 Hz |
| 53.82% von Limit | 55.20% von Limit | 182.58% von Limit |

V-n (Vektorsumme): 9.49 mm/s

SPEKTRALANALYSE - KOMPONENTEN FFT



| Kanal | Spitzwert | Spektrum 25% | Spektrum 50% | Spektrum 75% |
|-------|-----------|--------------|--------------|--------------|
| X | 2.69 mm/s | 6.7 Hz | 8.3 Hz | 10.6 Hz |
| Y | 2.76 mm/s | 5.9 Hz | 8.7 Hz | 12.2 Hz |
| Z | 9.13 mm/s | 8.3 Hz | 11.0 Hz | 16.1 Hz |

SPEKTRALANALYSE - FFT (DIN 4150-3)

