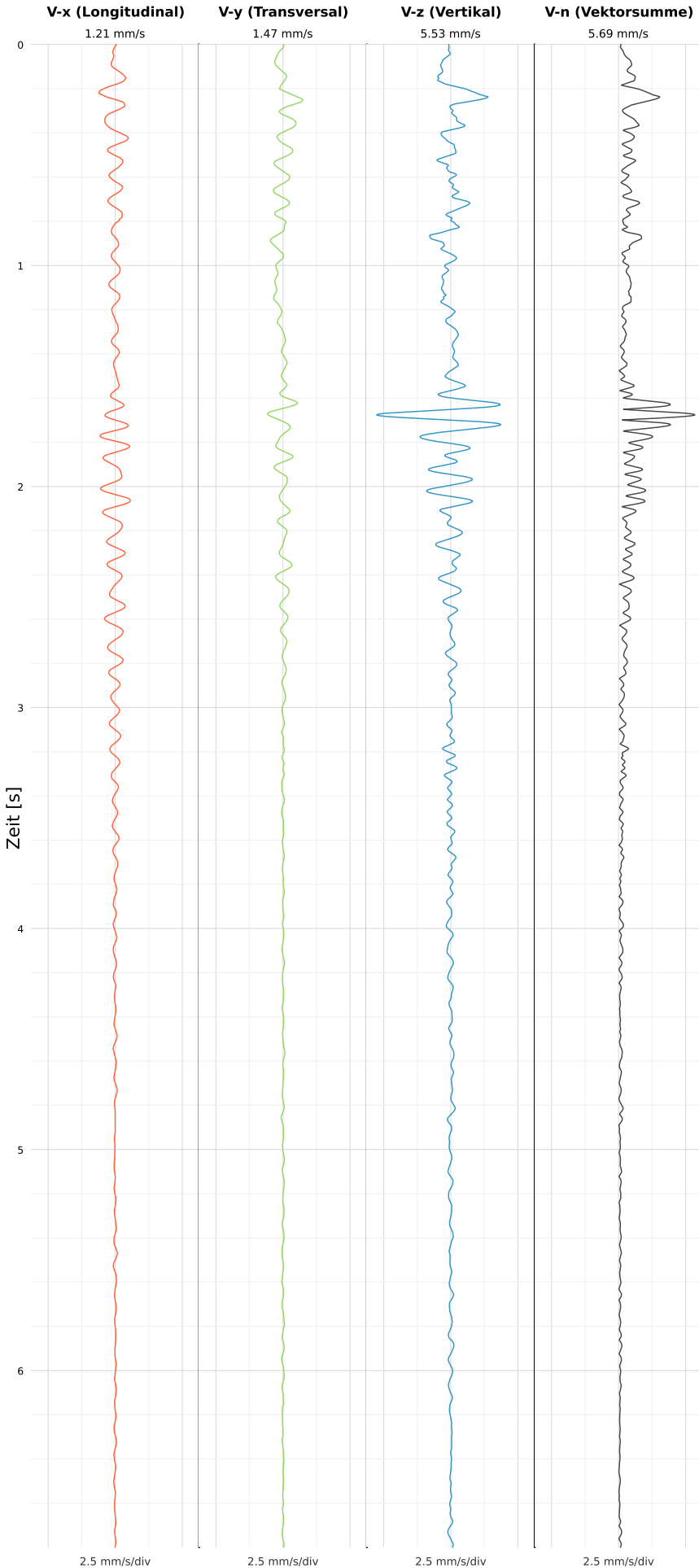


SCHWINGGESCHWINDIGKEIT



DATEI: 2493-PG4-12052026-064528\_raw.csv

Aufzeichnungsdauer: 6.80 s | Abtastrate: 1000 Hz

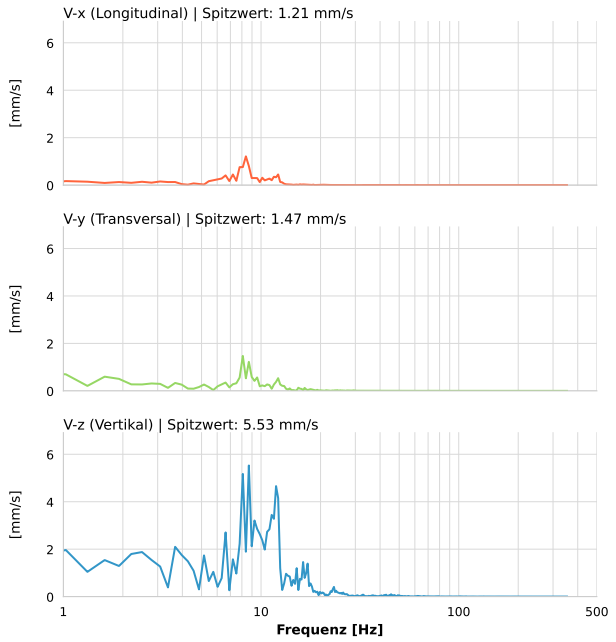
|                  |                          |
|------------------|--------------------------|
| Datum:           | 12.05.2026               |
| Zeit:            | 08:45:28                 |
| Event-ID:        | 2493-PG4-12052026-064528 |
| Kalibrier Datum: | 12.07.2025               |

Spitzwerte

| V-x (Longitudinal) | V-y (Transversal) | V-z (Vertikal)    |
|--------------------|-------------------|-------------------|
| 1.21 mm/s          | 1.47 mm/s         | 5.53 mm/s         |
| 8.5 Hz             | 8.5 Hz            | 8.7 Hz            |
| 24.25% von Limit   | 29.47% von Limit  | 110.56% von Limit |

V-n (Vektorsumme): 5.69 mm/s

SPEKTRALANALYSE - KOMPONENTEN FFT



| Kanal | Spitzwert | Spektrum 25% | Spektrum 50% | Spektrum 75% |
|-------|-----------|--------------|--------------|--------------|
| X     | 1.21 mm/s | 6.9 Hz       | 8.4 Hz       | 11.0 Hz      |
| Y     | 1.47 mm/s | 2.8 Hz       | 8.1 Hz       | 10.7 Hz      |
| Z     | 5.53 mm/s | 6.6 Hz       | 9.6 Hz       | 12.2 Hz      |

SPEKTRALANALYSE - FFT (DIN 4150-3)

