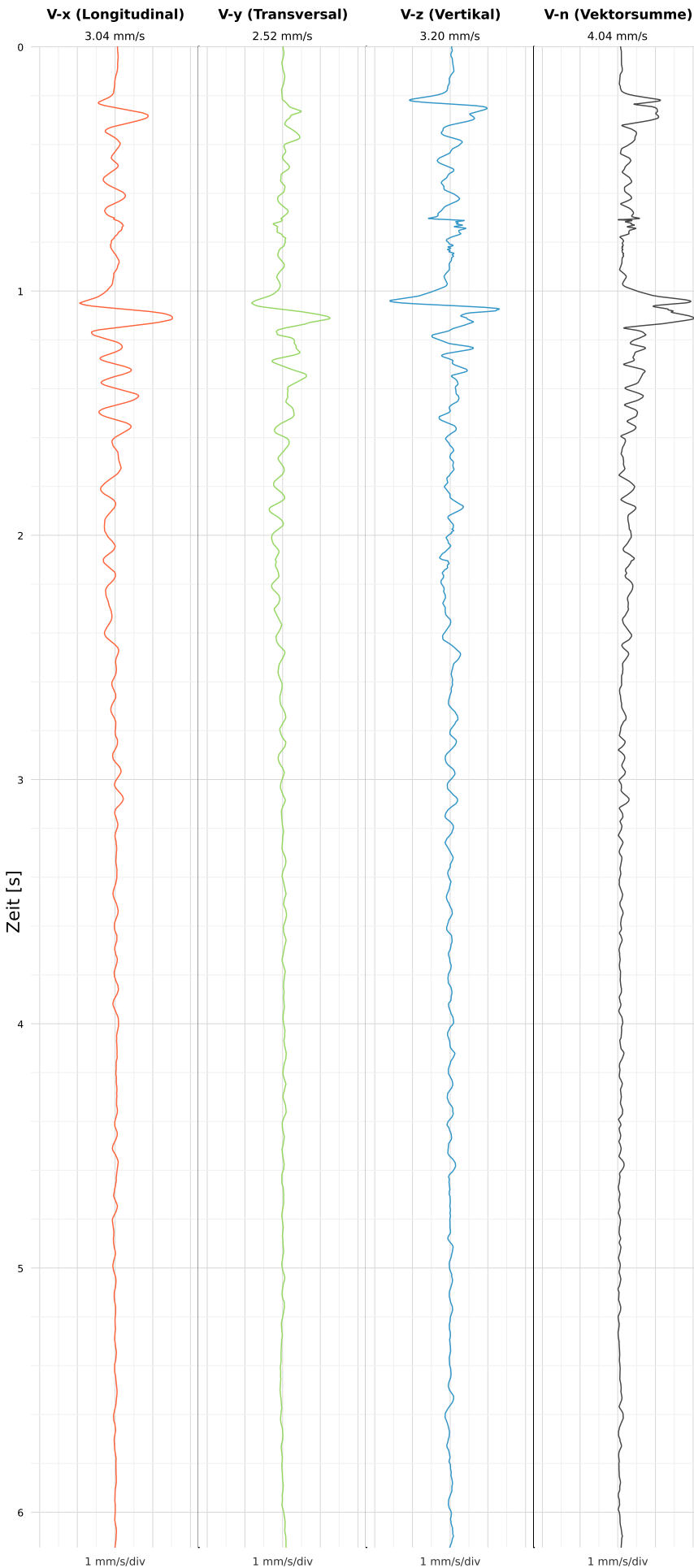


SCHWINGGESCHWINDIGKEIT



DATEI: 2493-PG4-12052026-063346_raw.csv

Aufzeichnungsdauer: 6.14 s | Abtastrate: 1000 Hz

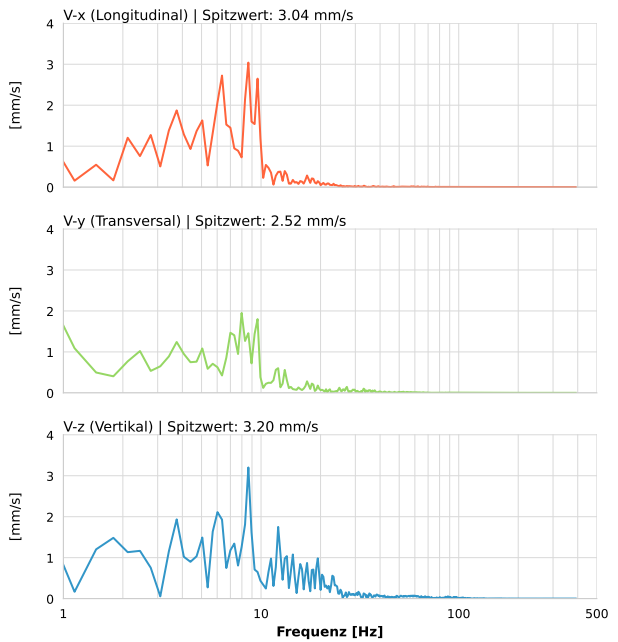
| | |
|------------------|--------------------------|
| Datum: | 12.05.2026 |
| Zeit: | 08:33:46 |
| Event-ID: | 2493-PG4-12052026-063346 |
| Kalibrier Datum: | 12.07.2025 |

Spitzwerte

| V-x (Longitudinal) | V-y (Transversal) | V-z (Vertikal) |
|--------------------|-------------------|------------------|
| 3.04 mm/s | 2.52 mm/s | 3.20 mm/s |
| 8.6 Hz | 0.3 Hz | 8.6 Hz |
| 60.81% von Limit | 50.35% von Limit | 64.04% von Limit |

V-n (Vektorsumme): 4.04 mm/s

SPEKTRALANALYSE - KOMPONENTEN FFT



| Kanal | Spitzwert | Spektrum 25% | Spektrum 50% | Spektrum 75% |
|-------|-----------|--------------|--------------|--------------|
| X | 3.04 mm/s | 4.1 Hz | 7.0 Hz | 9.6 Hz |
| Y | 2.52 mm/s | 3.7 Hz | 7.3 Hz | 11.2 Hz |
| Z | 3.20 mm/s | 6.0 Hz | 10.9 Hz | 19.4 Hz |

SPEKTRALANALYSE - FFT (DIN 4150-3)

