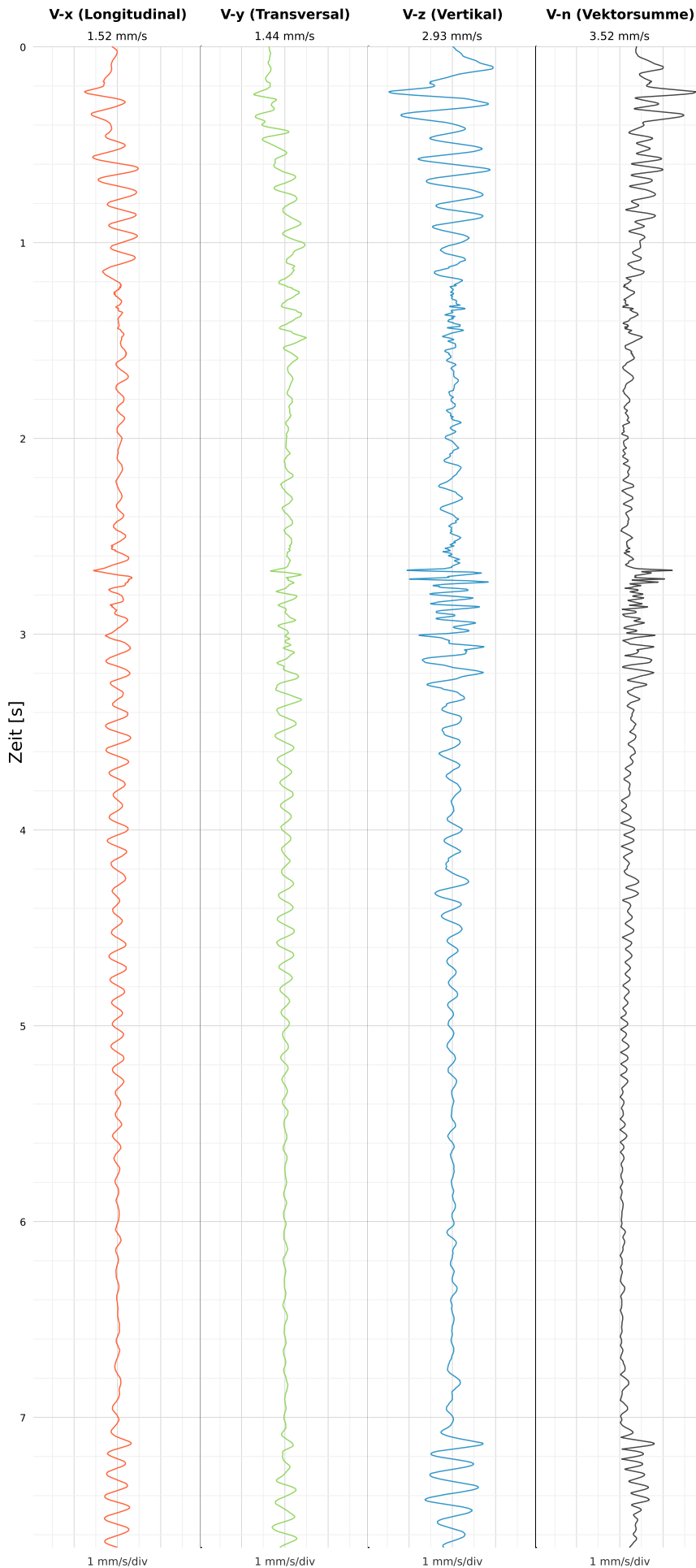


## SCHWINGGESCHWINDIGKEIT



**DATEI:** 2493-PG4-12052026-063042\_raw.csv

Aufzeichnungsdauer: 7.66 s | Abtastrate: 1000 Hz

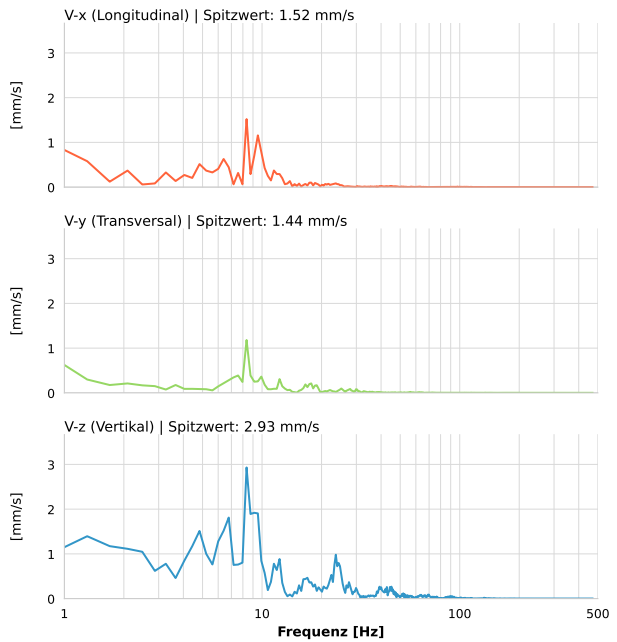
|                         |                          |
|-------------------------|--------------------------|
| <b>Datum:</b>           | 12.05.2026               |
| <b>Zeit:</b>            | 08:30:42                 |
| <b>Event-ID:</b>        | 2493-PG4-12052026-063042 |
| <b>Kalibrier Datum:</b> | 12.07.2025               |

### Spitzwerte

| V-x (Longitudinal) | V-y (Transversal) | V-z (Vertikal)   |
|--------------------|-------------------|------------------|
| 1.52 mm/s          | 1.44 mm/s         | 2.93 mm/s        |
| 8.6 Hz             | 8.6 Hz            | 8.6 Hz           |
| 30.42% von Limit   | 28.77% von Limit  | 58.63% von Limit |

**V-n (Vektorsumme):** 3.52 mm/s

## SPEKTRALANALYSE - KOMPONENTEN FFT



| Kanal | Spitzwert | Spektrum 25% | Spektrum 50% | Spektrum 75% |
|-------|-----------|--------------|--------------|--------------|
| X     | 1.52 mm/s | 4.0 Hz       | 8.4 Hz       | 12.3 Hz      |
| Y     | 1.44 mm/s | 1.7 Hz       | 8.4 Hz       | 19.3 Hz      |
| Z     | 2.93 mm/s | 6.4 Hz       | 10.3 Hz      | 26.0 Hz      |

## SPEKTRALANALYSE - FFT (DIN 4150-3)

