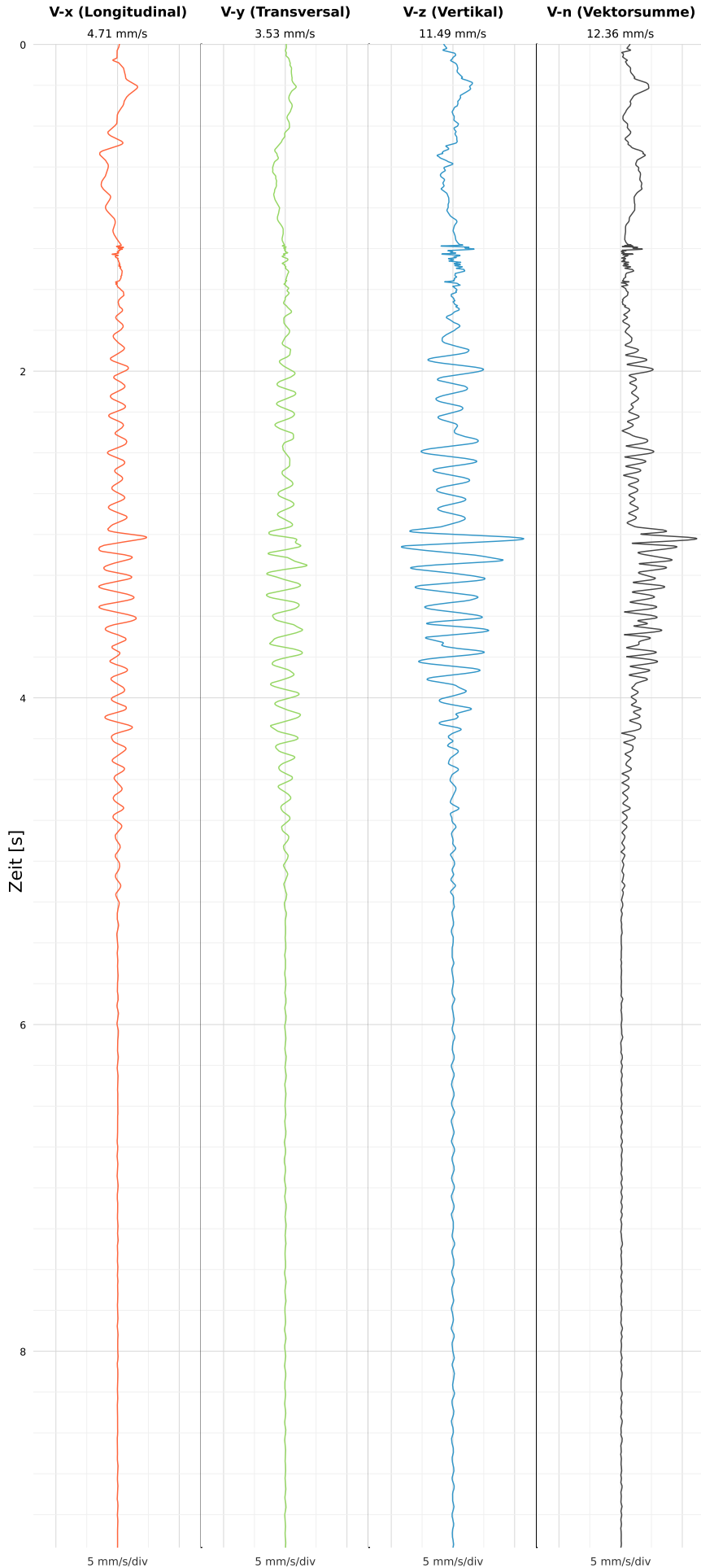


SCHWINGGESCHWINDIGKEIT



DATEI: 2493-PG4-11052026-220714_raw.csv

Aufzeichnungsdauer: 9.20 s | Abtastrate: 1000 Hz

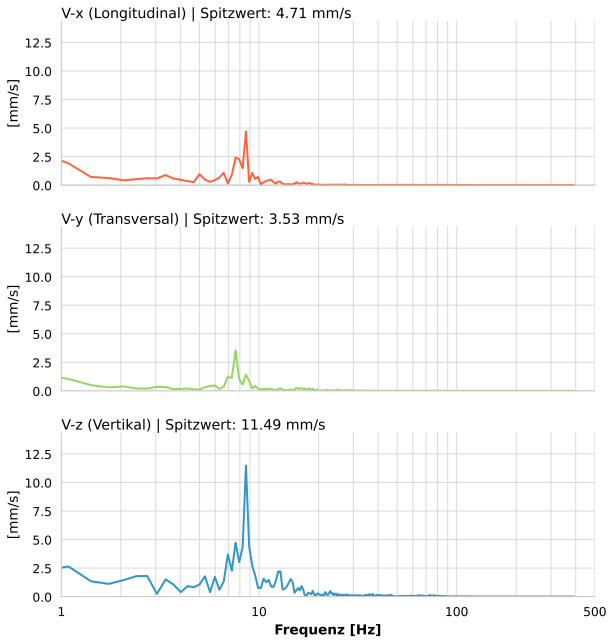
| | |
|------------------|--------------------------|
| Datum: | 12.05.2026 |
| Zeit: | 00:07:14 |
| Event-ID: | 2493-PG4-11052026-220714 |
| Kalibrier Datum: | 12.07.2025 |

Spitzwerte

| V-x (Longitudinal) | V-y (Transversal) | V-z (Vertikal) |
|--------------------|-------------------|-------------------|
| 4.71 mm/s | 3.53 mm/s | 11.49 mm/s |
| 8.6 Hz | 7.7 Hz | 8.6 Hz |
| 94.20% von Limit | 70.53% von Limit | 229.71% von Limit |

V-n (Vektorsumme): 12.36 mm/s

SPEKTRALANALYSE - KOMPONENTEN FFT



| Kanal | Spitzwert | Spektrum 25% | Spektrum 50% | Spektrum 75% |
|-------|------------|--------------|--------------|--------------|
| X | 4.71 mm/s | 2.7 Hz | 7.6 Hz | 9.9 Hz |
| Y | 3.53 mm/s | 3.7 Hz | 7.6 Hz | 11.5 Hz |
| Z | 11.49 mm/s | 7.0 Hz | 8.9 Hz | 15.4 Hz |

SPEKTRALANALYSE - FFT (DIN 4150-3)

