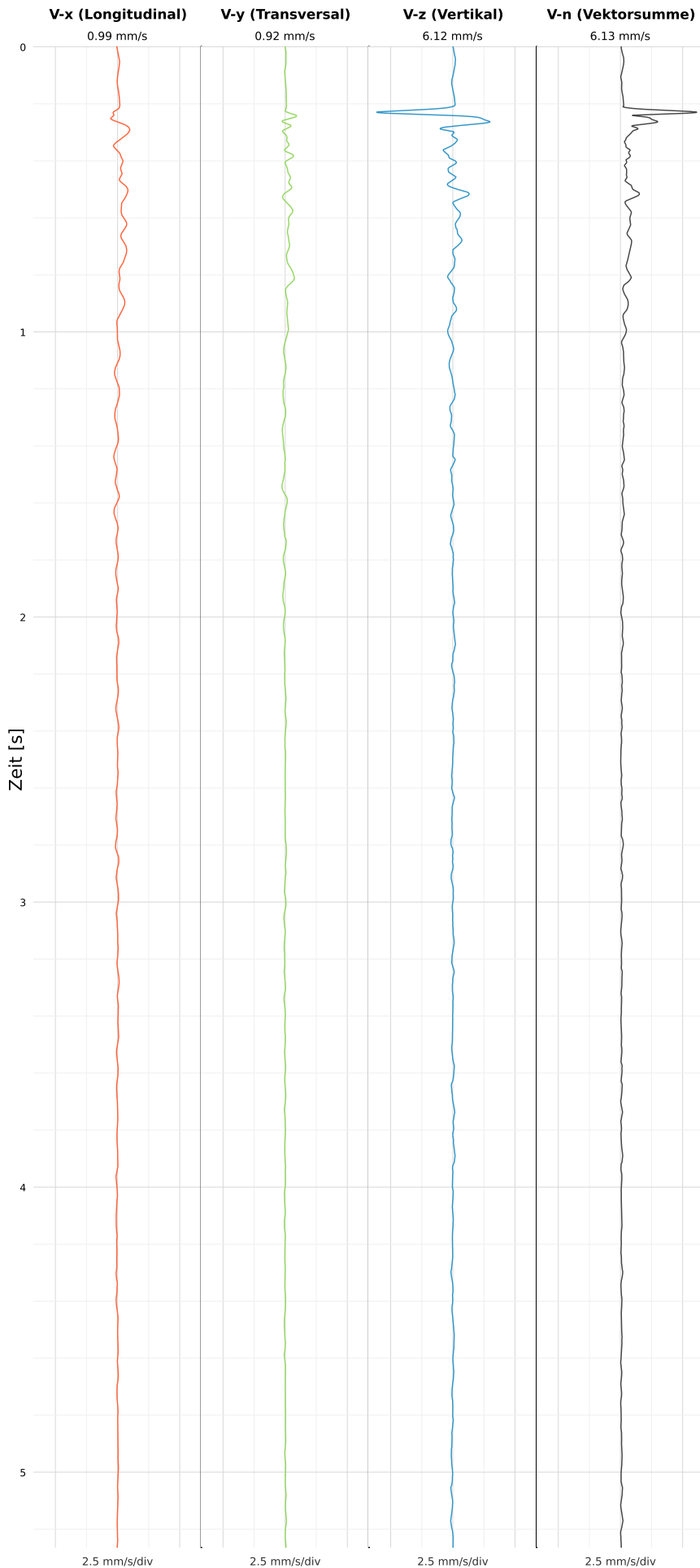


SCHWINGGESCHWINDIGKEIT



DATEI: 2493-PG4-11052026-204757_raw.csv

Aufzeichnungsdauer: 5.26 s | Abtastrate: 1000 Hz

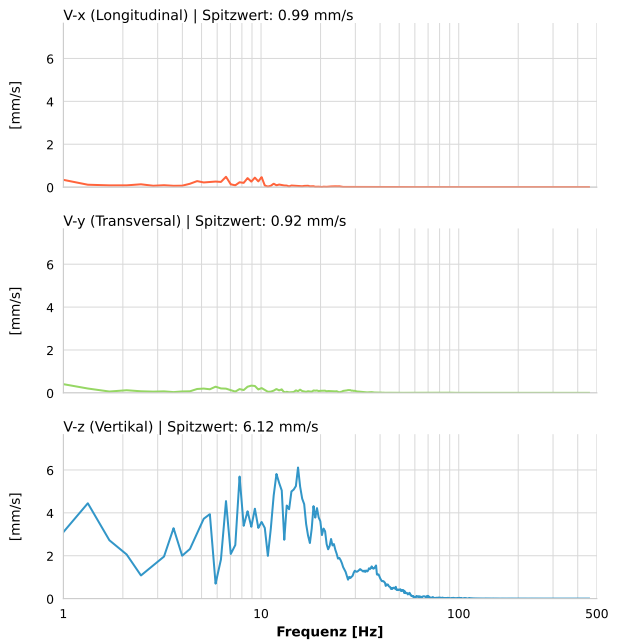
| | |
|------------------|--------------------------|
| Datum: | 11.05.2026 |
| Zeit: | 22:47:57 |
| Event-ID: | 2493-PG4-11052026-204757 |
| Kalibrier Datum: | 12.07.2025 |

Spitzwerte

| V-x (Longitudinal) | V-y (Transversal) | V-z (Vertikal) |
|--------------------|-------------------|-------------------|
| 0.99 mm/s | 0.92 mm/s | 6.12 mm/s |
| 0.4 Hz | 0.4 Hz | 11.8 Hz |
| 19.79% von Limit | 18.38% von Limit | 112.34% von Limit |

V-n (Vektorsumme): 6.13 mm/s

SPEKTRALANALYSE - KOMPONENTEN FFT



| Kanal | Spitzwert | Spektrum 25% | Spektrum 50% | Spektrum 75% |
|-------|-----------|--------------|--------------|--------------|
| X | 0.99 mm/s | 2.8 Hz | 7.8 Hz | 12.3 Hz |
| Y | 0.92 mm/s | 4.7 Hz | 10.4 Hz | 24.1 Hz |
| Z | 6.12 mm/s | 9.7 Hz | 16.1 Hz | 26.0 Hz |

SPEKTRALANALYSE - FFT (DIN 4150-3)

