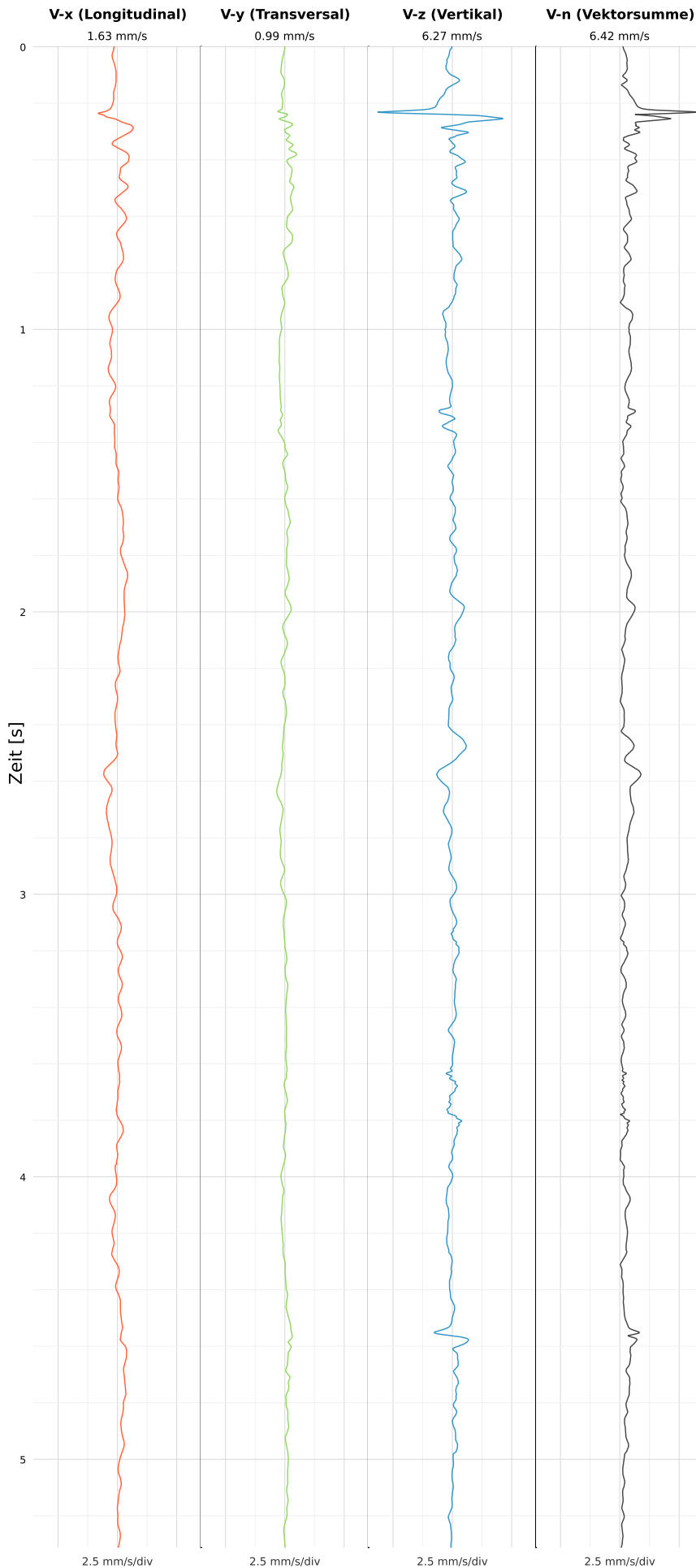


## SCHWINGGESCHWINDIGKEIT



DATEI: 2493-PG4-11052026-194853\_raw.csv

Aufzeichnungsdauer: 5.31 s | Abtastrate: 1000 Hz

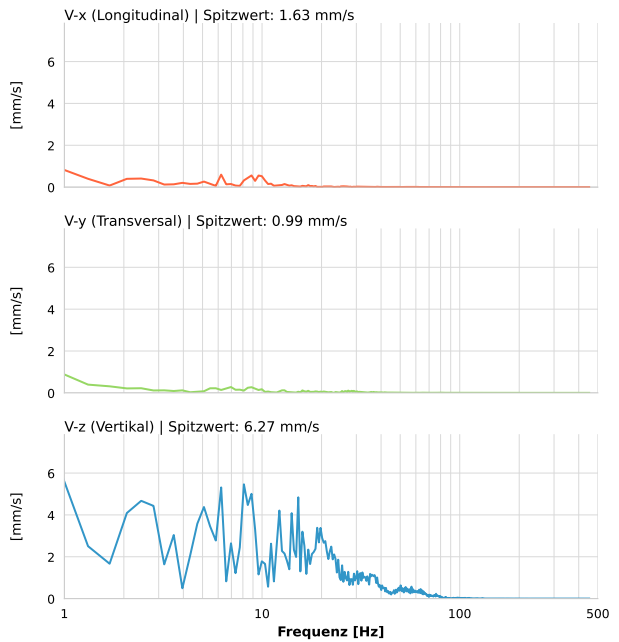
|                  |                          |
|------------------|--------------------------|
| Datum:           | 11.05.2026               |
| Zeit:            | 21:48:53                 |
| Event-ID:        | 2493-PG4-11052026-194853 |
| Kalibrier Datum: | 12.07.2025               |

### Spitzwerte

| V-x (Longitudinal) | V-y (Transversal) | V-z (Vertikal)    |
|--------------------|-------------------|-------------------|
| 1.63 mm/s          | 0.99 mm/s         | 6.27 mm/s         |
| 0.8 Hz             | 0.8 Hz            | 0.8 Hz            |
| 32.56% von Limit   | 19.72% von Limit  | 125.34% von Limit |

V-n (Vektorsumme): 6.42 mm/s

## SPEKTRALANALYSE - KOMPONENTEN FFT



| Kanal | Spitzwert | Spektrum 25% | Spektrum 50% | Spektrum 75% |
|-------|-----------|--------------|--------------|--------------|
| X     | 1.63 mm/s | 1.3 Hz       | 7.7 Hz       | 12.6 Hz      |
| Y     | 0.99 mm/s | 1.3 Hz       | 7.7 Hz       | 22.0 Hz      |
| Z     | 6.27 mm/s | 7.7 Hz       | 16.4 Hz      | 29.9 Hz      |

## SPEKTRALANALYSE - FFT (DIN 4150-3)

