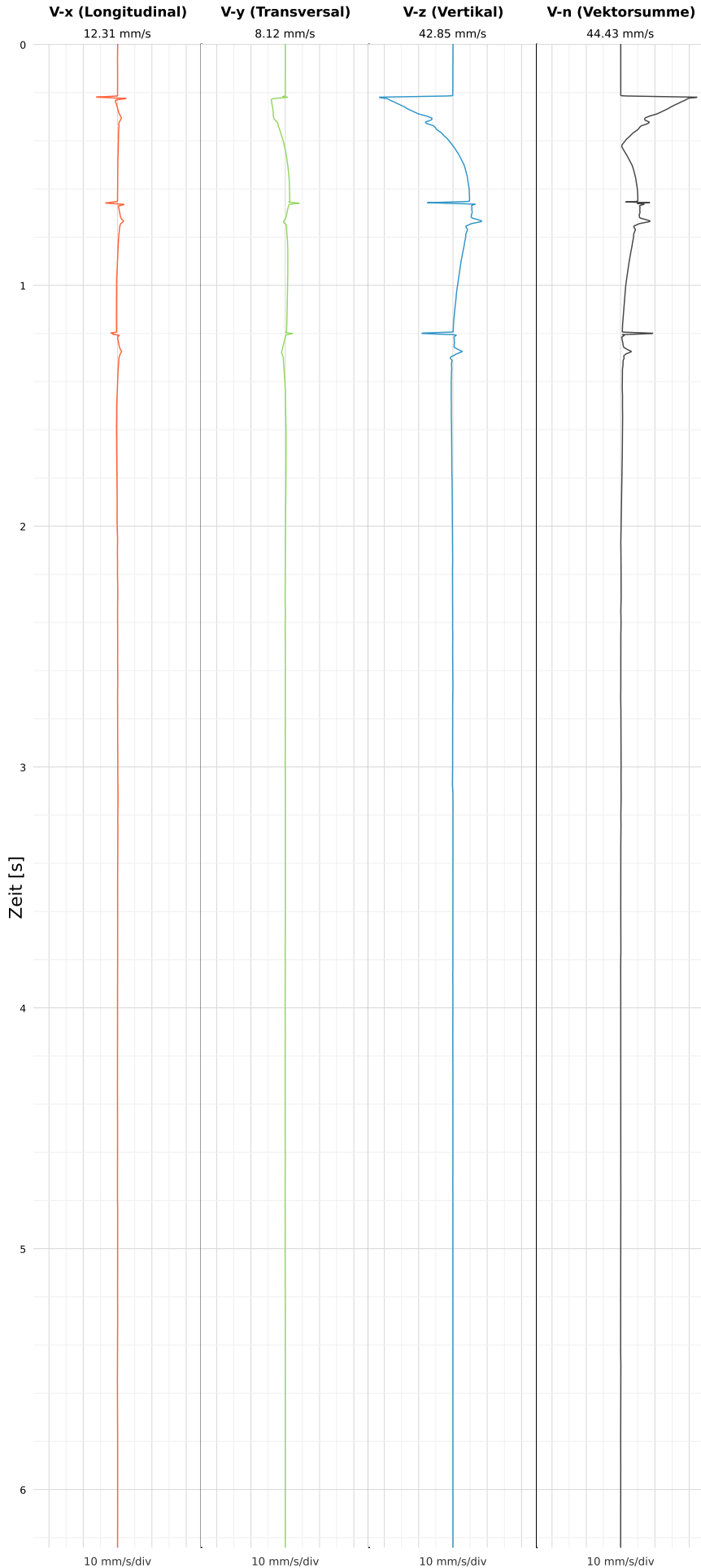


SCHWINGGESCHWINDIGKEIT



DATEI: 2493-PG4-11052026-192613_raw.csv

Aufzeichnungsdauer: 6.24 s | Abtastrate: 1000 Hz

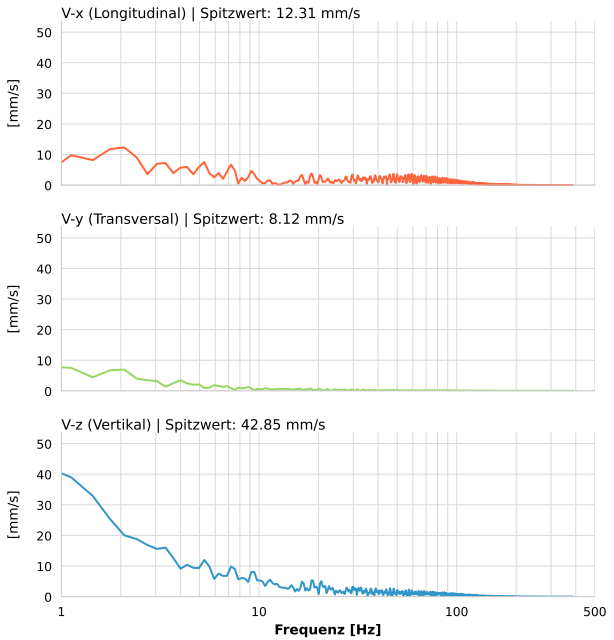
| | |
|------------------|--------------------------|
| Datum: | 11.05.2026 |
| Zeit: | 21:26:13 |
| Event-ID: | 2493-PG4-11052026-192613 |
| Kalibrier Datum: | 12.07.2025 |

Spitzwerte

| V-x (Longitudinal) | V-y (Transversal) | V-z (Vertikal) |
|--------------------|-------------------|-------------------|
| 12.31 mm/s | 8.12 mm/s | 42.85 mm/s |
| 0.3 Hz | 1.0 Hz | 0.8 Hz |
| 246.14% von Limit | 162.48% von Limit | 857.09% von Limit |

V-n (Vektorsumme): 44.43 mm/s

SPEKTRALANALYSE - KOMPONENTEN FFT



| Kanal | Spitzwert | Spektrum 25% | Spektrum 50% | Spektrum 75% |
|-------|------------|--------------|--------------|--------------|
| X | 12.31 mm/s | 18.8 Hz | 53.0 Hz | 86.4 Hz |
| Y | 8.12 mm/s | 2.1 Hz | 8.8 Hz | 49.8 Hz |
| Z | 42.85 mm/s | 2.7 Hz | 12.3 Hz | 48.2 Hz |

SPEKTRALANALYSE - FFT (DIN 4150-3)

