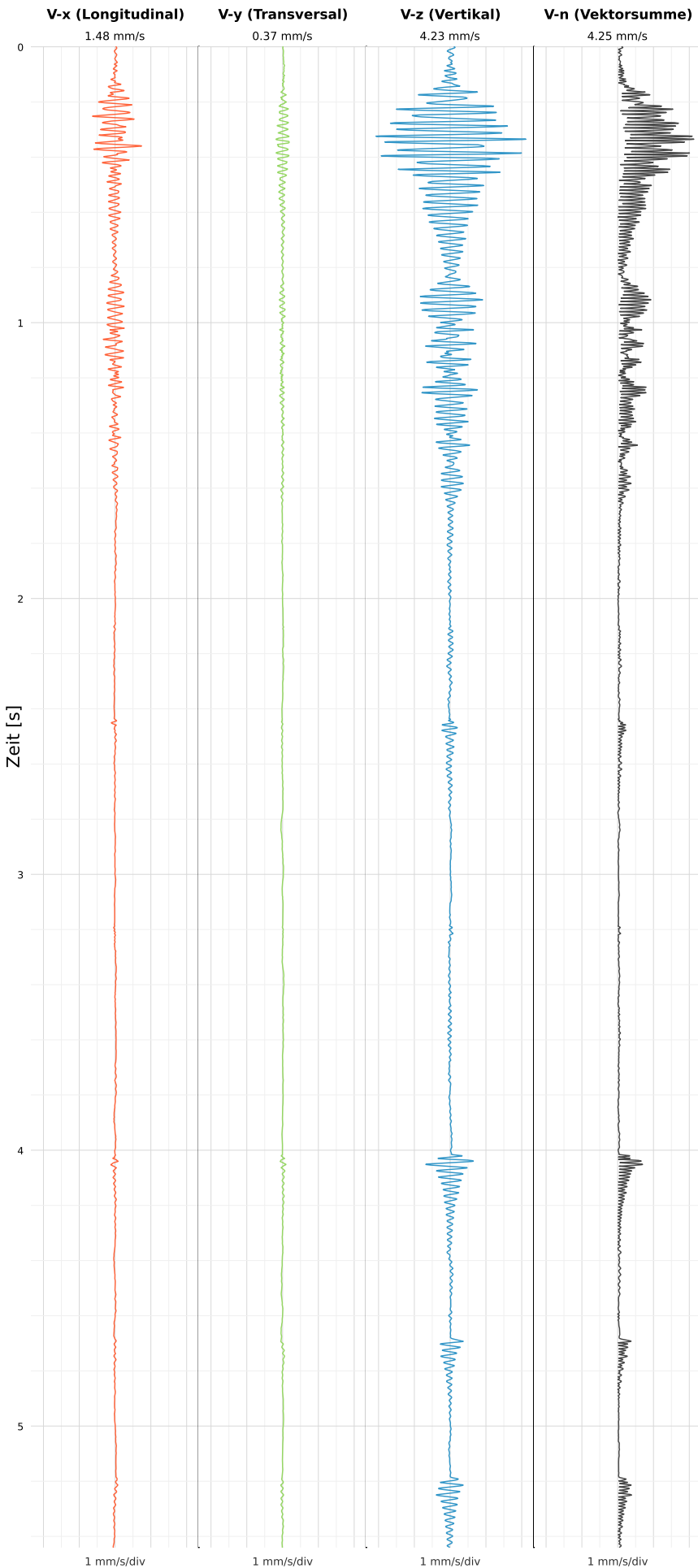


SCHWINGGESCHWINDIGKEIT



DATEI: 2492-PG14-26052026-145524_raw.csv

Aufzeichnungsdauer: 5.44 s | Abtastrate: 1000 Hz

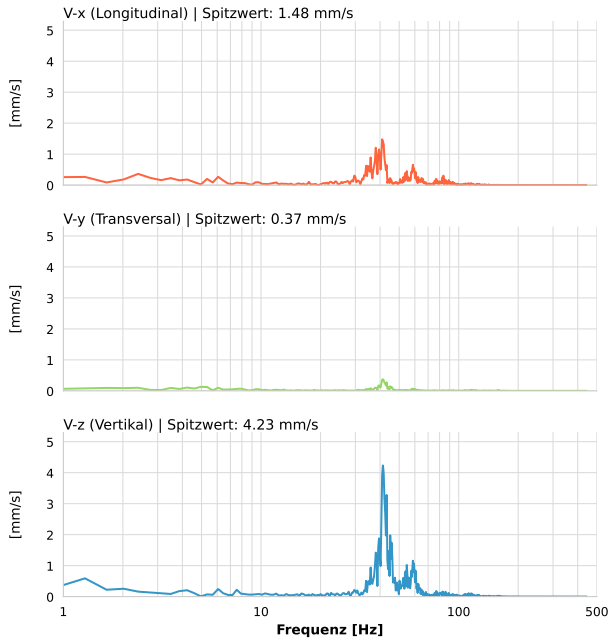
| | |
|------------------|---------------------------|
| Datum: | 26.05.2026 |
| Zeit: | 14:55:24 |
| Event-ID: | 2492-PG14-26052026-145524 |
| Kalibrier Datum: | 12.07.2025 |

Spitzwerte

| V-x (Longitudinal) | V-y (Transversal) | V-z (Vertikal) |
|--------------------|-------------------|------------------|
| 1.48 mm/s | 0.37 mm/s | 4.23 mm/s |
| 41.0 Hz | 41.5 Hz | 41.5 Hz |
| 11.60% von Limit | 2.90% von Limit | 32.85% von Limit |

V-n (Vektorsumme): 4.25 mm/s

SPEKTRALANALYSE - KOMPONENTEN FFT



| Kanal | Spitzwert | Spektrum 25% | Spektrum 50% | Spektrum 75% |
|-------|-----------|--------------|--------------|--------------|
| X | 1.48 mm/s | 36.2 Hz | 41.7 Hz | 60.5 Hz |
| Y | 0.37 mm/s | 29.6 Hz | 41.7 Hz | 62.7 Hz |
| Z | 4.23 mm/s | 40.6 Hz | 43.2 Hz | 56.1 Hz |

SPEKTRALANALYSE - FFT (DIN 4150-3)

