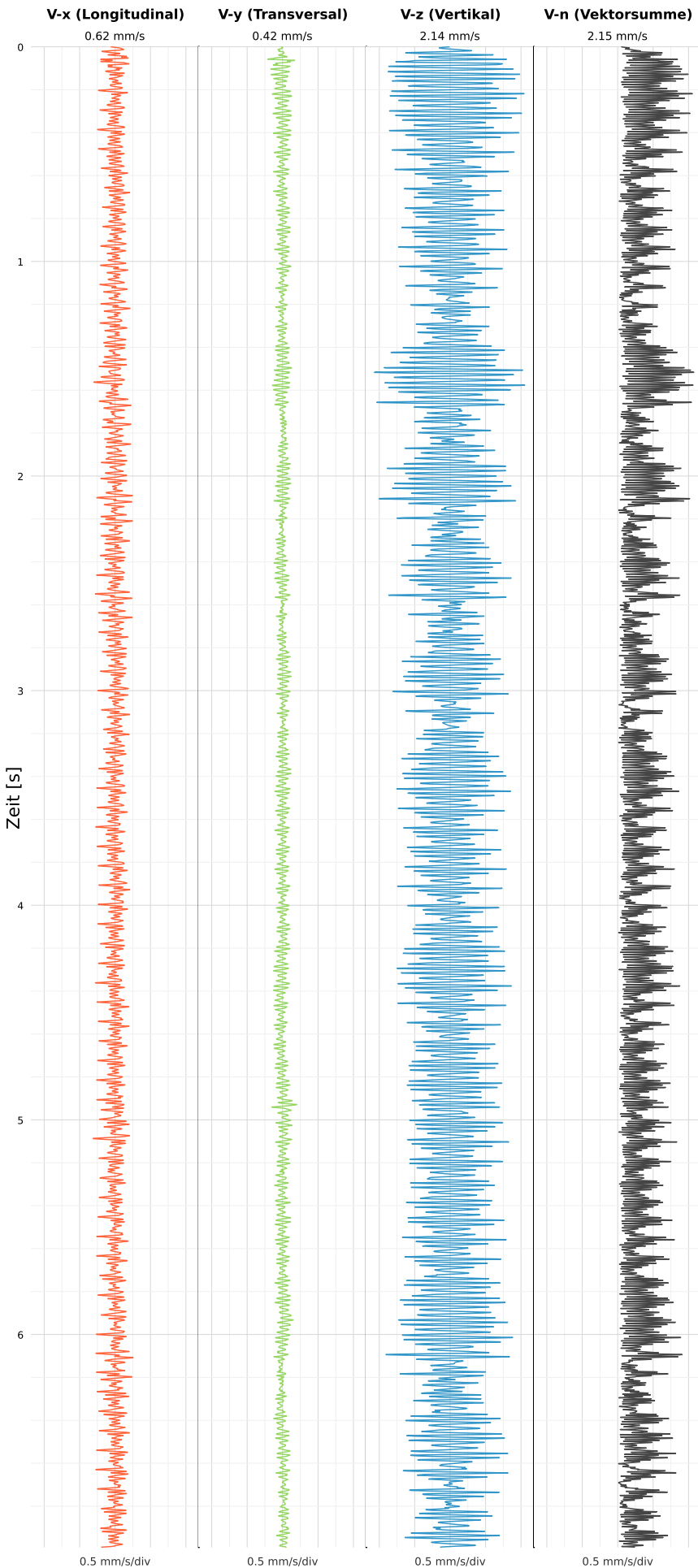


SCHWINGGESCHWINDIGKEIT



DATEI: 2492-PG14-26052026-134642\_raw.csv

Aufzeichnungsdauer: 6.99 s | Abtastrate: 1000 Hz

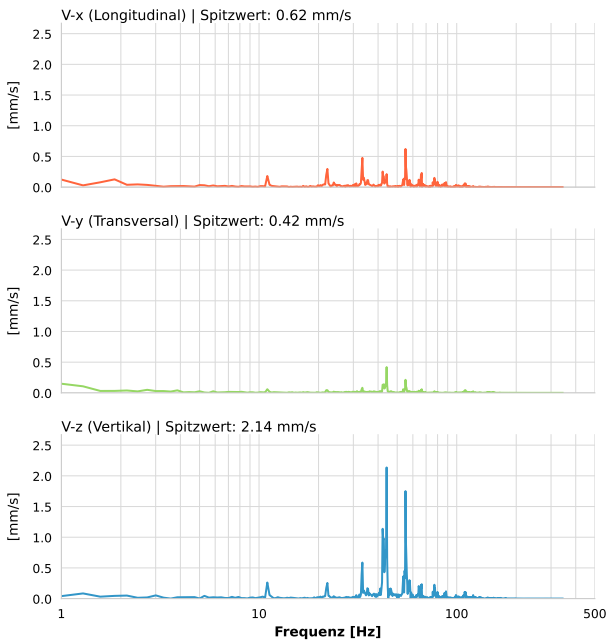
|                  |                           |
|------------------|---------------------------|
| Datum:           | 26.05.2026                |
| Zeit:            | 13:46:42                  |
| Event-ID:        | 2492-PG14-26052026-134642 |
| Kalibrier Datum: | 12.07.2025                |

Spitzwerte

| V-x (Longitudinal) | V-y (Transversal) | V-z (Vertikal)   |
|--------------------|-------------------|------------------|
| 0.62 mm/s          | 0.42 mm/s         | 2.14 mm/s        |
| 33.2 Hz            | 44.1 Hz           | 44.1 Hz          |
| 5.76% von Limit    | 3.11% von Limit   | 15.81% von Limit |

V-n (Vektorsumme): 2.15 mm/s

SPEKTRALANALYSE - KOMPONENTEN FFT



| Kanal | Spitzwert | Spektrum 25% | Spektrum 50% | Spektrum 75% |
|-------|-----------|--------------|--------------|--------------|
| X     | 0.62 mm/s | 33.3 Hz      | 55.1 Hz      | 76.5 Hz      |
| Y     | 0.42 mm/s | 33.3 Hz      | 44.5 Hz      | 78.2 Hz      |
| Z     | 2.14 mm/s | 42.5 Hz      | 51.1 Hz      | 64.2 Hz      |

SPEKTRALANALYSE - FFT (DIN 4150-3)

