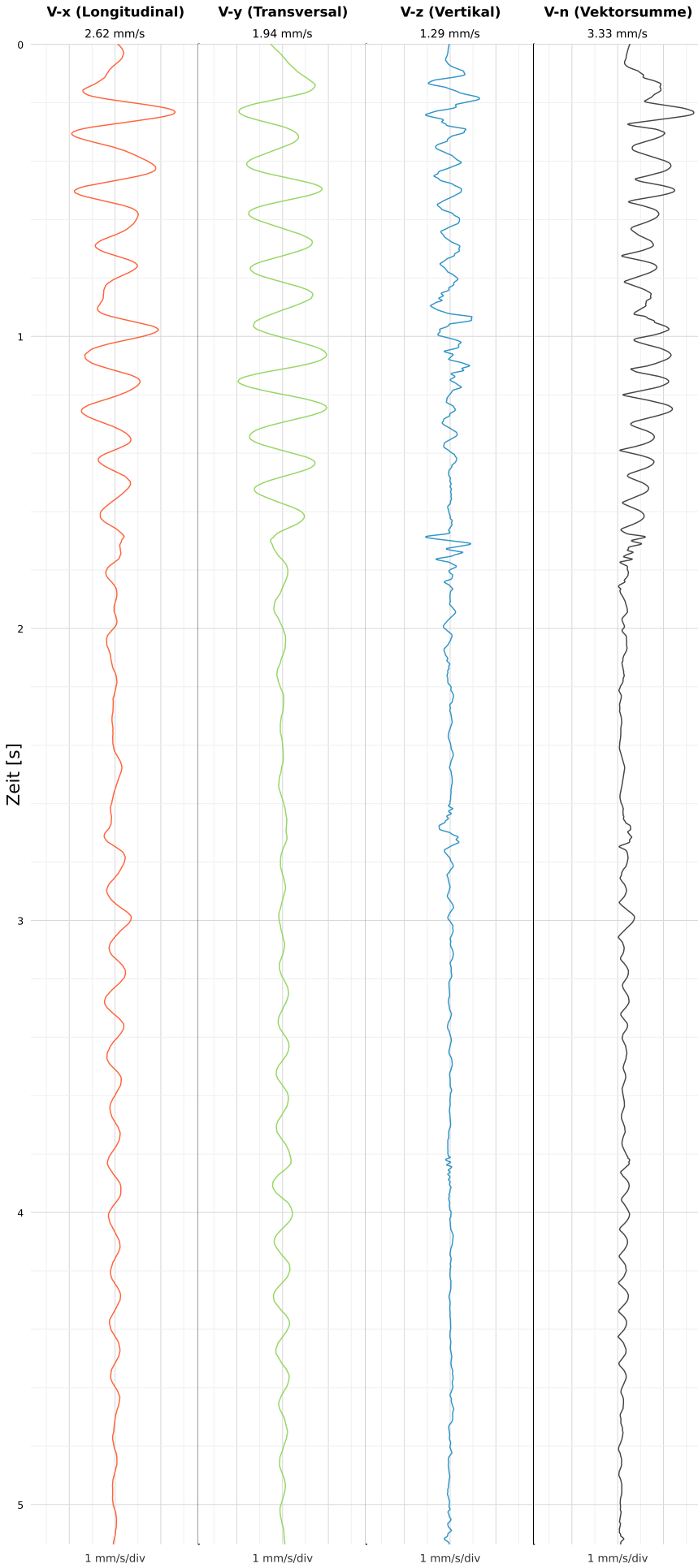


SCHWINGGESCHWINDIGKEIT



DATEI: 2492-PG14-19052026-150441_raw.csv

Aufzeichnungsdauer: 5.14 s | Abtastrate: 1000 Hz

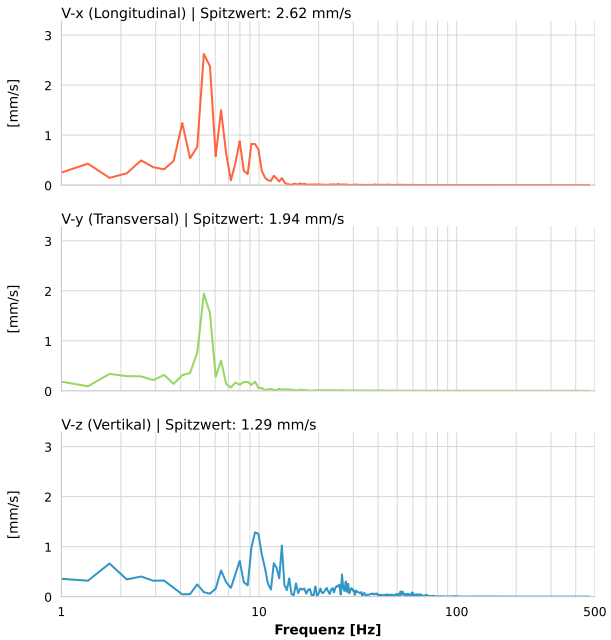
| | |
|------------------|---------------------------|
| Datum: | 19.05.2026 |
| Zeit: | 15:04:41 |
| Event-ID: | 2492-PG14-19052026-150441 |
| Kalibrier Datum: | 12.07.2025 |

Spitzwerte

| V-x (Longitudinal) | V-y (Transversal) | V-z (Vertikal) |
|--------------------|-------------------|------------------|
| 2.62 mm/s | 1.94 mm/s | 1.29 mm/s |
| 5.5 Hz | 5.5 Hz | 9.7 Hz |
| 52.45% von Limit | 38.83% von Limit | 25.70% von Limit |

V-n (Vektorsumme): 3.33 mm/s

SPEKTRALANALYSE - KOMPONENTEN FFT



| Kanal | Spitzwert | Spektrum 25% | Spektrum 50% | Spektrum 75% |
|-------|-----------|--------------|--------------|--------------|
| X | 2.62 mm/s | 4.9 Hz | 5.6 Hz | 9.2 Hz |
| Y | 1.94 mm/s | 4.9 Hz | 5.6 Hz | 8.8 Hz |
| Z | 1.29 mm/s | 8.8 Hz | 12.3 Hz | 26.3 Hz |

SPEKTRALANALYSE - FFT (DIN 4150-3)

