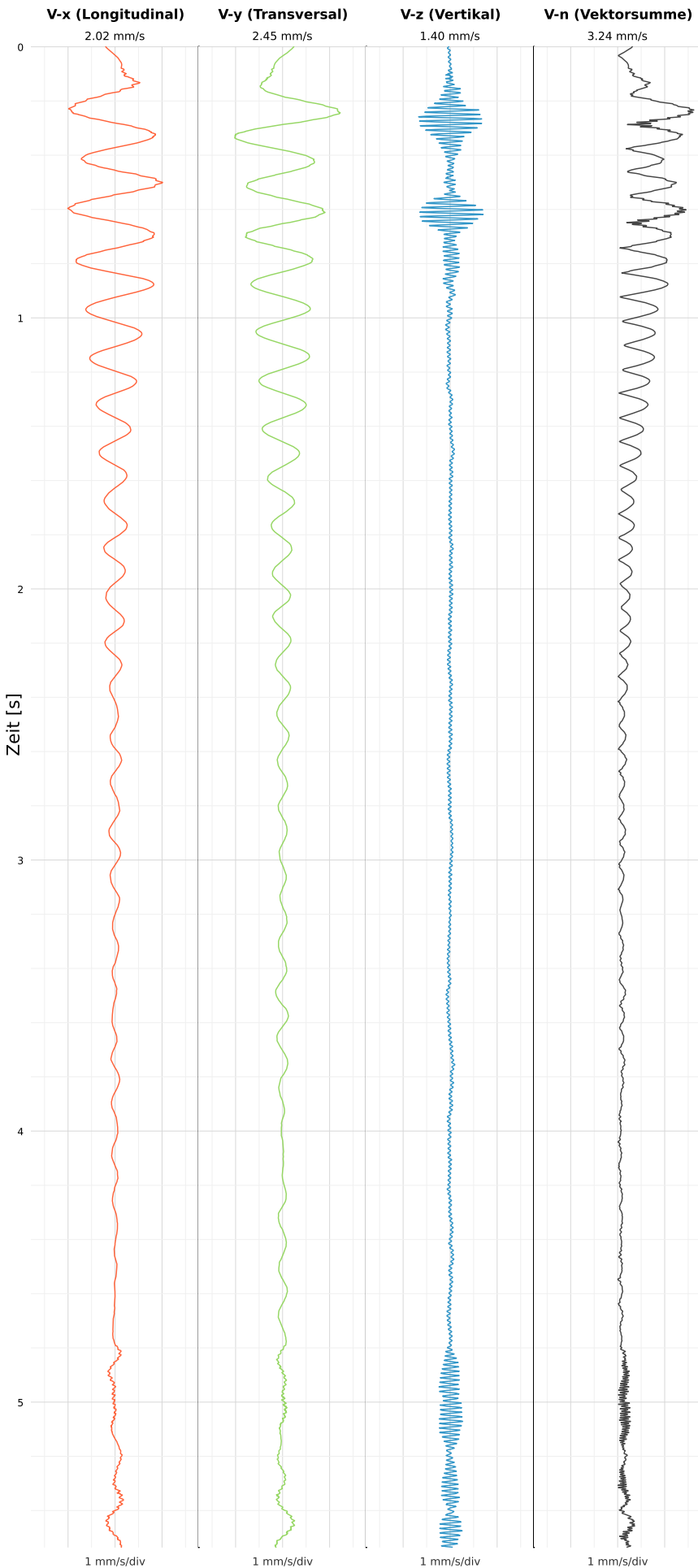


## SCHWINGGESCHWINDIGKEIT



DATEI: 2492-PG14-19052026-003516\_raw.csv

Aufzeichnungsdauer: 5.54 s | Abtastrate: 1000 Hz

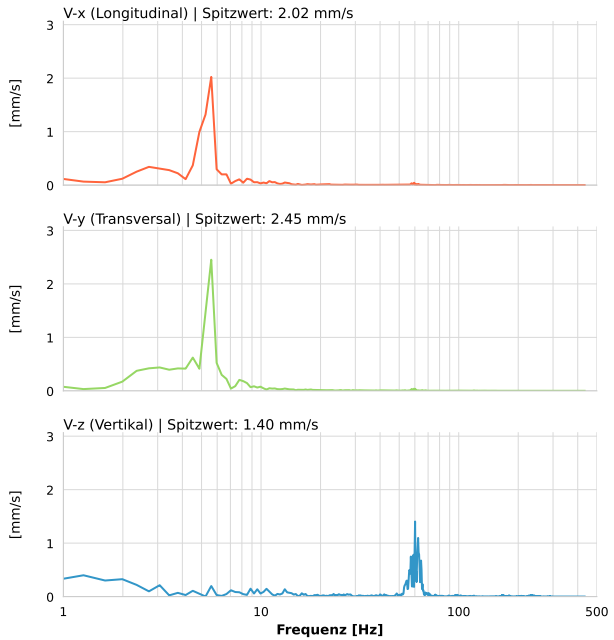
|                         |                           |
|-------------------------|---------------------------|
| <b>Datum:</b>           | 19.05.2026                |
| <b>Zeit:</b>            | 00:35:16                  |
| <b>Event-ID:</b>        | 2492-PG14-19052026-003516 |
| <b>Kalibrier Datum:</b> | 12.07.2025                |

### Spitzwerte

| V-x (Longitudinal) | V-y (Transversal) | V-z (Vertikal)  |
|--------------------|-------------------|-----------------|
| 2.02 mm/s          | 2.45 mm/s         | 1.40 mm/s       |
| 5.6 Hz             | 5.6 Hz            | 60.0 Hz         |
| 40.48% von Limit   | 49.04% von Limit  | 8.78% von Limit |

**V-n (Vektorsumme):** 3.24 mm/s

## SPEKTRALANALYSE - KOMPONENTEN FFT



| Kanal | Spitzwert | Spektrum 25% | Spektrum 50% | Spektrum 75% |
|-------|-----------|--------------|--------------|--------------|
| X     | 2.02 mm/s | 4.9 Hz       | 5.6 Hz       | 12.8 Hz      |
| Y     | 2.45 mm/s | 4.5 Hz       | 5.6 Hz       | 13.5 Hz      |
| Z     | 1.40 mm/s | 54.0 Hz      | 60.2 Hz      | 64.1 Hz      |

## SPEKTRALANALYSE - FFT (DIN 4150-3)

