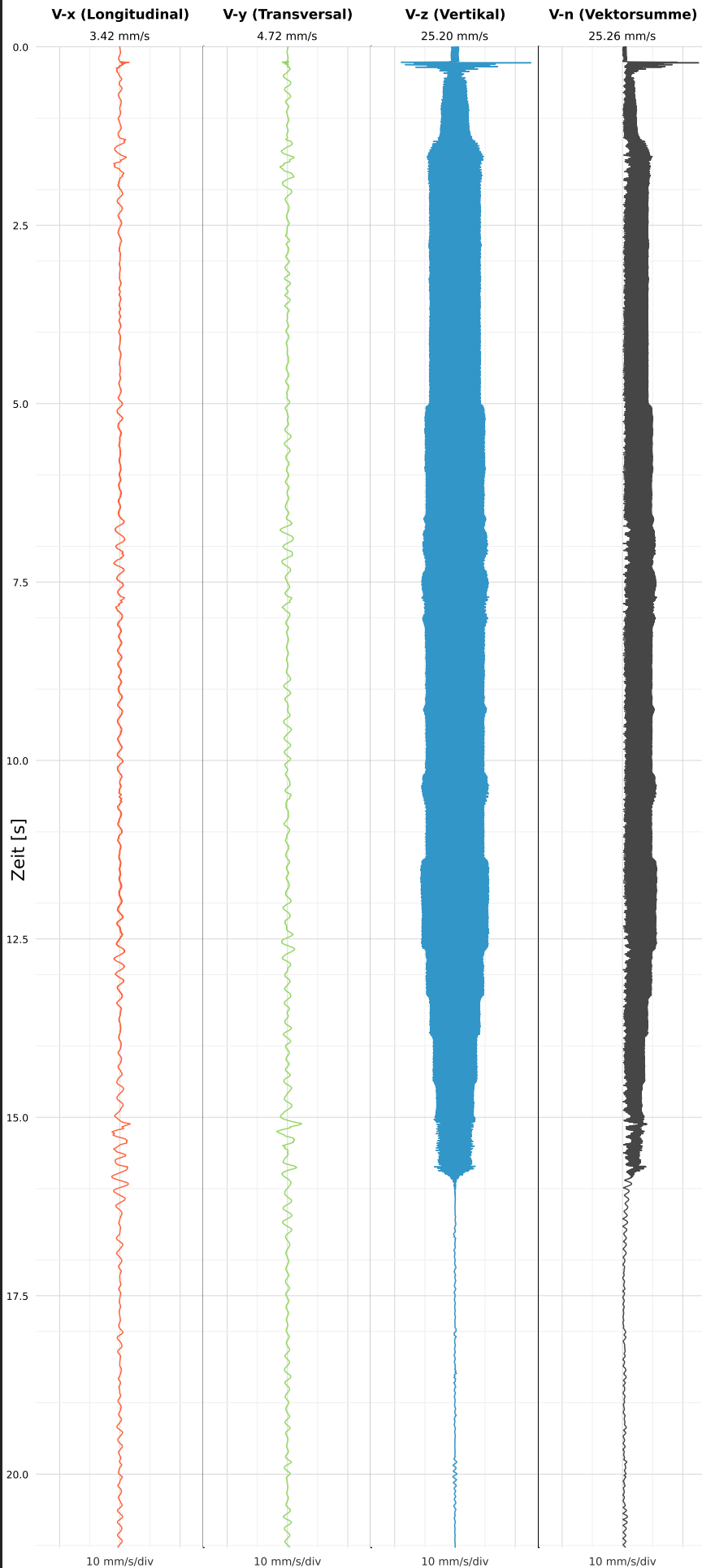


SCHWINGGESCHWINDIGKEIT



DATEI: 2492-PG14-18052026-181921\_raw.csv

Aufzeichnungsdauer: 21.02 s | Abtastrate: 1000 Hz

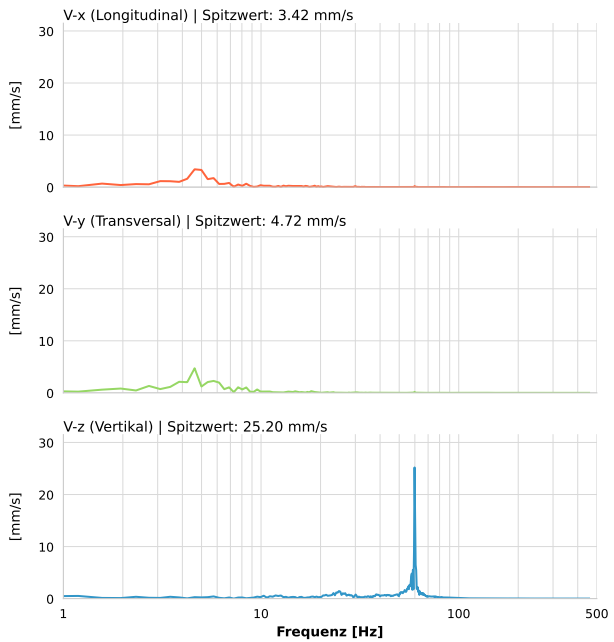
|                  |                           |
|------------------|---------------------------|
| Datum:           | 18.05.2026                |
| Zeit:            | 18:19:21                  |
| Event-ID:        | 2492-PG14-18052026-181921 |
| Kalibrier Datum: | 12.07.2025                |

Spitzwerte

| V-x (Longitudinal) | V-y (Transversal) | V-z (Vertikal)    |
|--------------------|-------------------|-------------------|
| 3.42 mm/s          | 4.72 mm/s         | 25.20 mm/s        |
| 4.5 Hz             | 4.5 Hz            | 59.9 Hz           |
| 68.48% von Limit   | 94.47% von Limit  | 157.54% von Limit |

V-n (Vektorsumme): 25.26 mm/s

SPEKTRALANALYSE - KOMPONENTEN FFT



| Kanal | Spitzwert  | Spektrum 25% | Spektrum 50% | Spektrum 75% |
|-------|------------|--------------|--------------|--------------|
| X     | 3.42 mm/s  | 4.6 Hz       | 6.5 Hz       | 22.9 Hz      |
| Y     | 4.72 mm/s  | 4.2 Hz       | 5.8 Hz       | 14.5 Hz      |
| Z     | 25.20 mm/s | 46.5 Hz      | 59.4 Hz      | 60.9 Hz      |

SPEKTRALANALYSE - FFT (DIN 4150-3)

