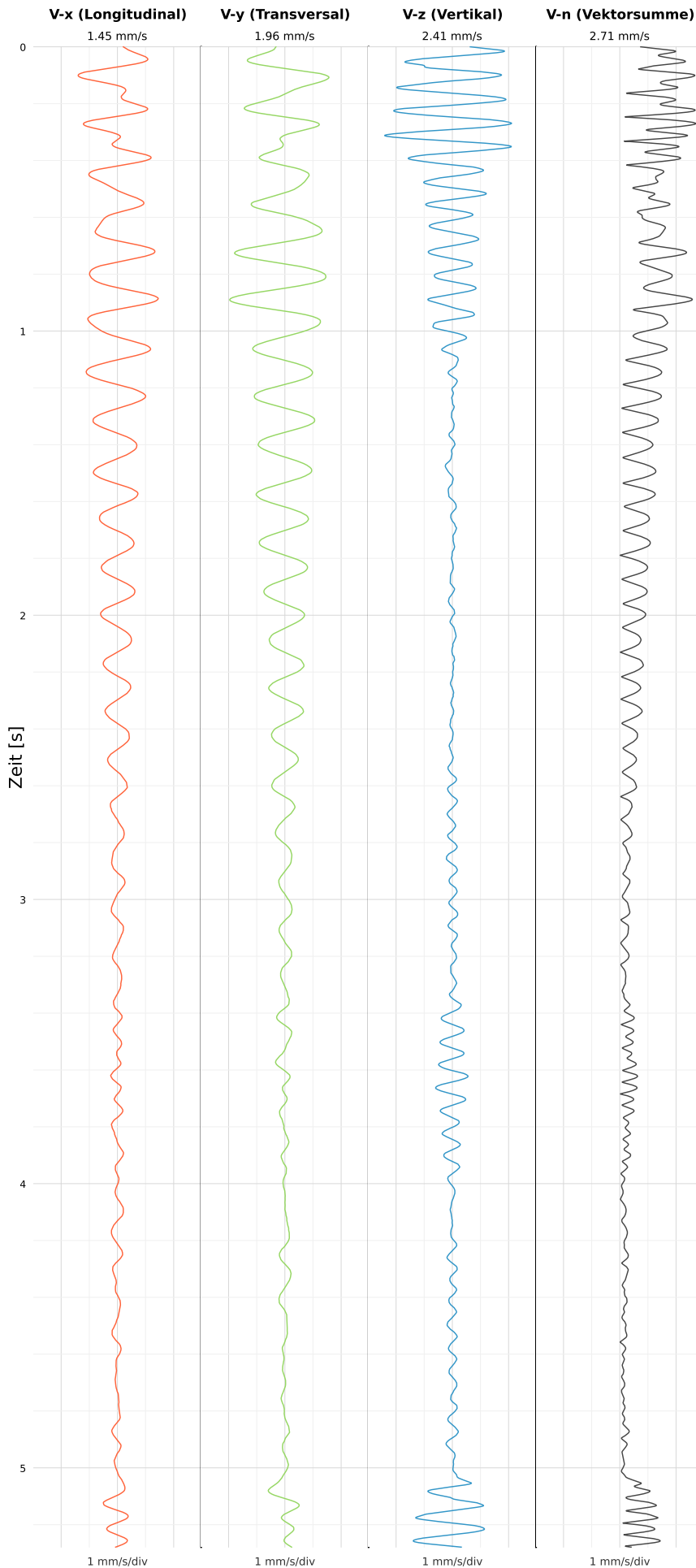


## SCHWINGGESCHWINDIGKEIT



DATEI: 2492-PG14-15052026-143346\_raw.csv

Aufzeichnungsdauer: 5.28 s | Abtastrate: 1000 Hz

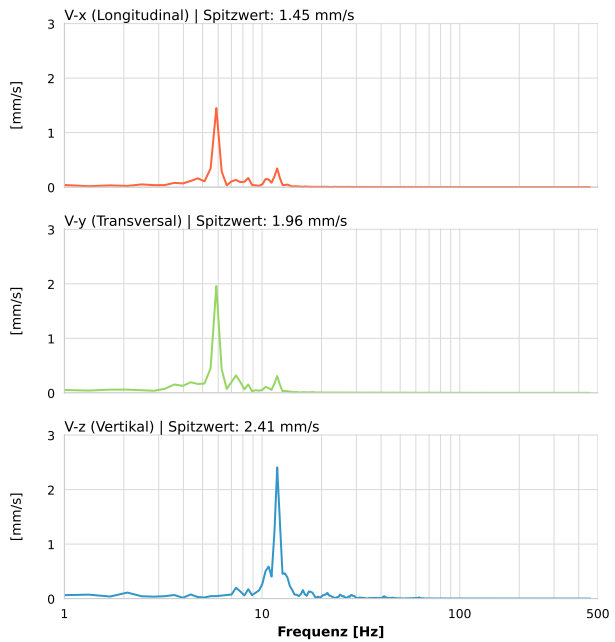
|                         |                           |
|-------------------------|---------------------------|
| <b>Datum:</b>           | 15.05.2026                |
| <b>Zeit:</b>            | 14:33:46                  |
| <b>Event-ID:</b>        | 2492-PG14-15052026-143346 |
| <b>Kalibrier Datum:</b> | 12.07.2025                |

### Spitzwerte

| V-x (Longitudinal) | V-y (Transversal) | V-z (Vertikal)   |
|--------------------|-------------------|------------------|
| 1.45 mm/s          | 1.96 mm/s         | 2.41 mm/s        |
| 5.9 Hz             | 5.9 Hz            | 11.9 Hz          |
| 29.02% von Limit   | 39.21% von Limit  | 43.88% von Limit |

**V-n (Vektorsumme):** 2.71 mm/s

### SPEKTRALANALYSE - KOMPONENTEN FFT



| Kanal | Spitzwert | Spektrum 25% | Spektrum 50% | Spektrum 75% |
|-------|-----------|--------------|--------------|--------------|
| X     | 1.45 mm/s | 5.9 Hz       | 6.2 Hz       | 11.9 Hz      |
| Y     | 1.96 mm/s | 5.9 Hz       | 6.2 Hz       | 11.9 Hz      |
| Z     | 2.41 mm/s | 11.2 Hz      | 11.9 Hz      | 15.7 Hz      |

### SPEKTRALANALYSE - FFT (DIN 4150-3)

