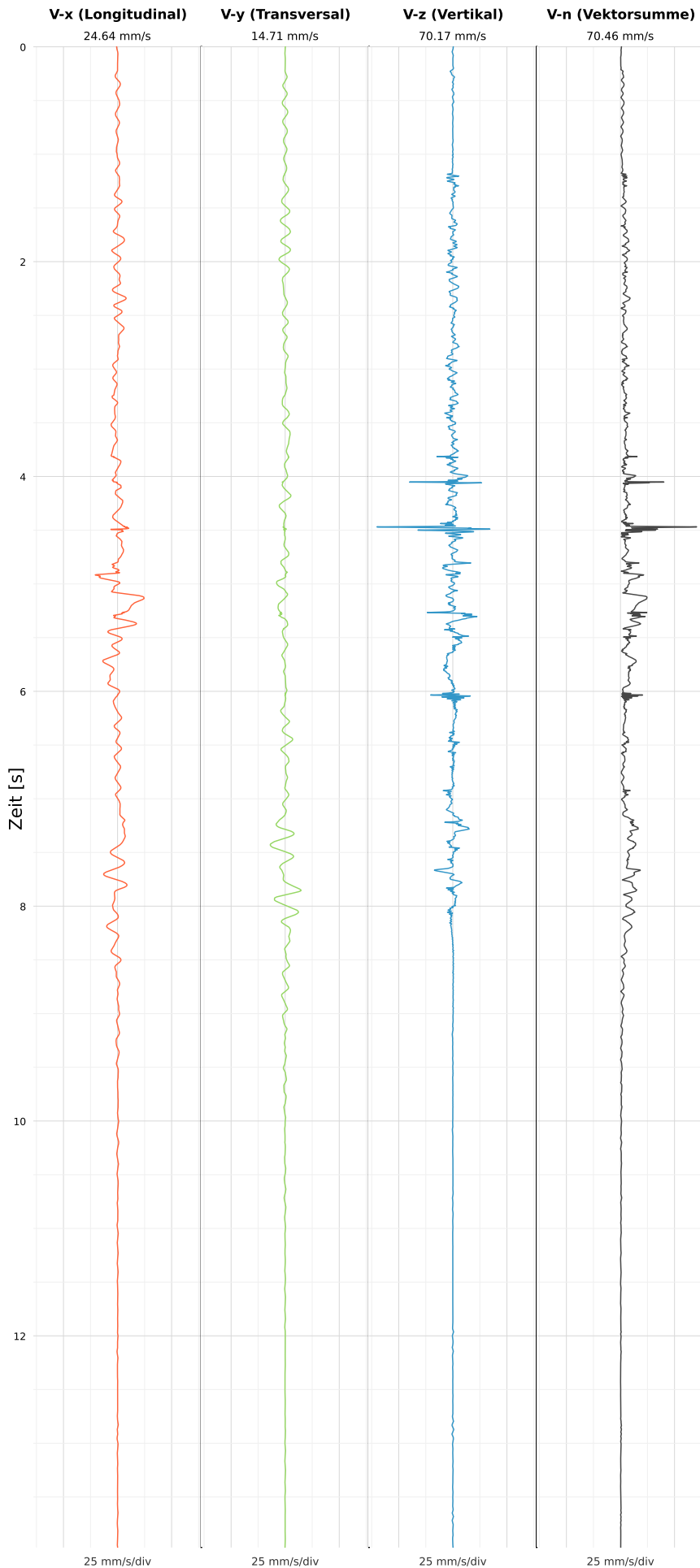


SCHWINGGESCHWINDIGKEIT



DATEI: 2492-PG14-15052026-124455_raw.csv

Aufzeichnungsdauer: 13.97 s | Abtastrate: 1000 Hz

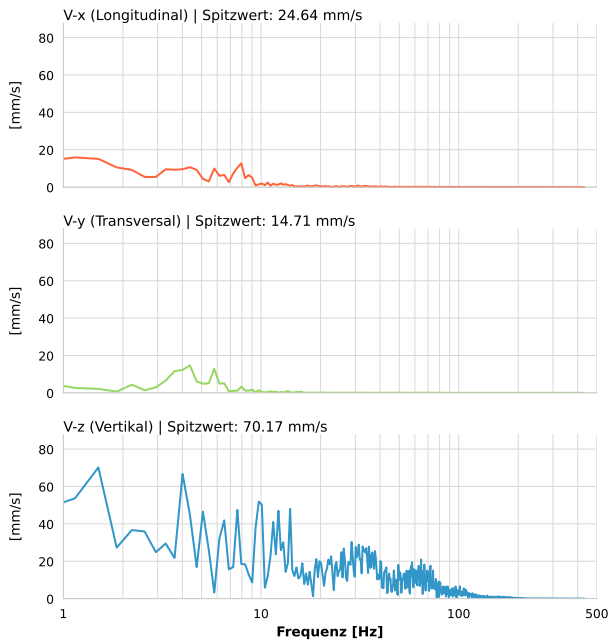
| | |
|-------------------------|---------------------------|
| Datum: | 15.05.2026 |
| Zeit: | 12:44:55 |
| Event-ID: | 2492-PG14-15052026-124455 |
| Kalibrier Datum: | 12.07.2025 |

Spitzwerte

| V-x (Longitudinal) | V-y (Transversal) | V-z (Vertikal) |
|--------------------|-------------------|--------------------|
| 24.64 mm/s | 14.71 mm/s | 70.17 mm/s |
| 0.4 Hz | 5.7 Hz | 3.1 Hz |
| 492.71% von Limit | 294.17% von Limit | 1403.34% von Limit |

V-n (Vektorsumme): 70.46 mm/s

SPEKTRALANALYSE - KOMPONENTEN FFT



| Kanal | Spitzwert | Spektrum 25% | Spektrum 50% | Spektrum 75% |
|-------|------------|--------------|--------------|--------------|
| X | 24.64 mm/s | 1.9 Hz | 5.8 Hz | 11.5 Hz |
| Y | 14.71 mm/s | 3.3 Hz | 4.4 Hz | 6.5 Hz |
| Z | 70.17 mm/s | 11.9 Hz | 32.3 Hz | 60.6 Hz |

SPEKTRALANALYSE - FFT (DIN 4150-3)

