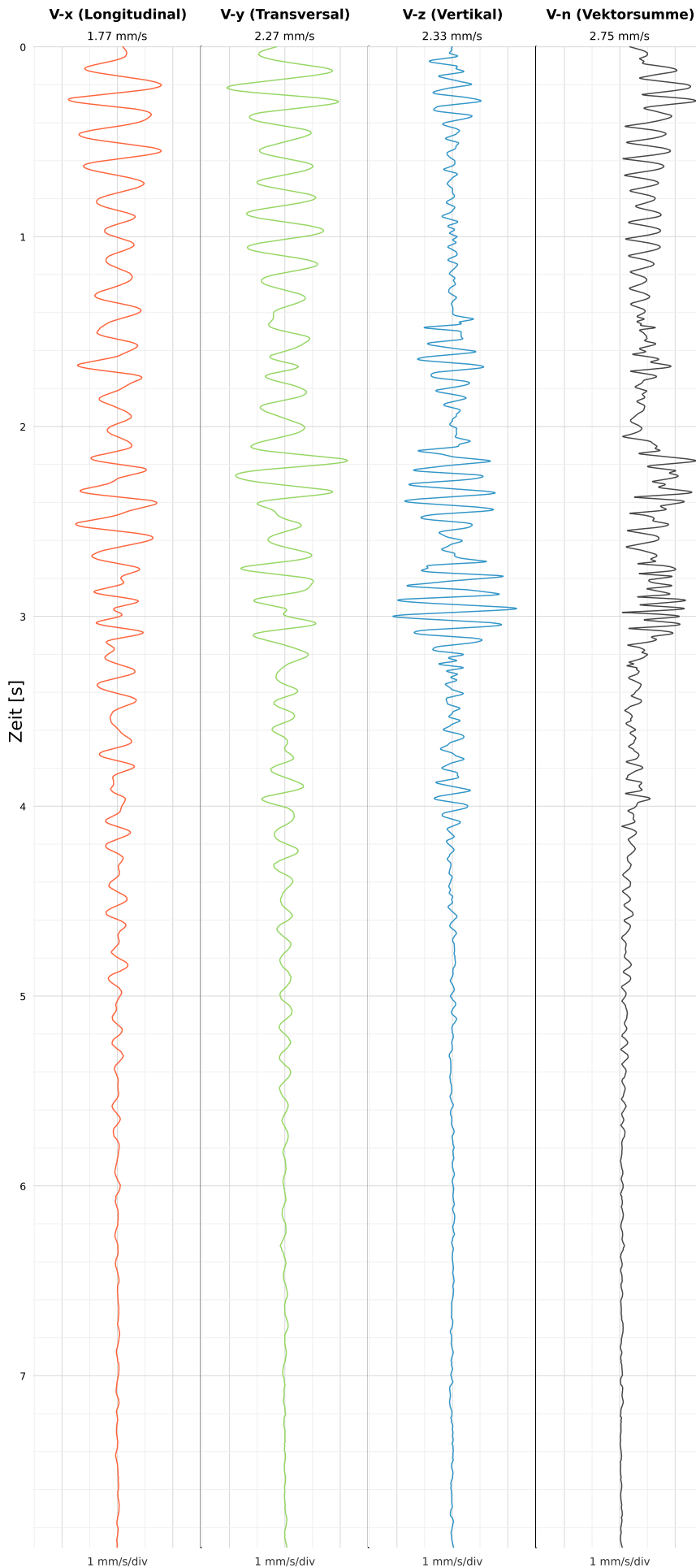


SCHWINGGESCHWINDIGKEIT



DATEI: 2492-PG14-14052026-181132\_raw.csv

Aufzeichnungsdauer: 7.90 s | Abtastrate: 1000 Hz

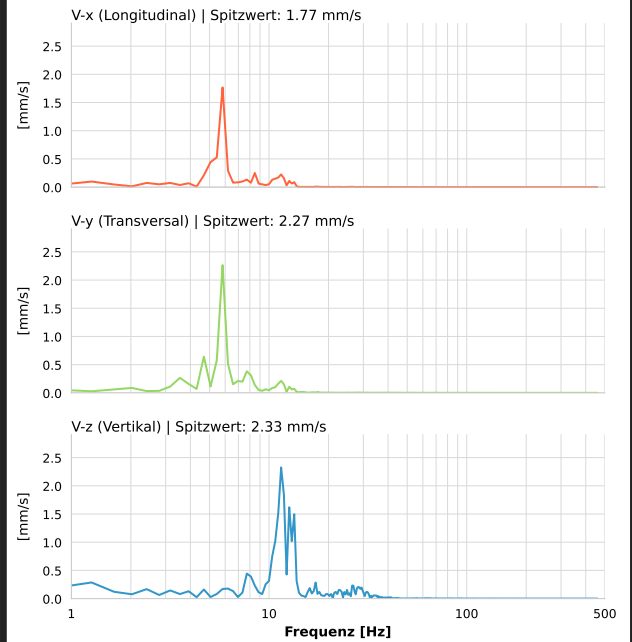
|                  |                           |
|------------------|---------------------------|
| Datum:           | 14.05.2026                |
| Zeit:            | 20:11:32                  |
| Event-ID:        | 2492-PG14-14052026-181132 |
| Kalibrier Datum: | 12.07.2025                |

Spitzwerte

| V-x (Longitudinal) | V-y (Transversal) | V-z (Vertikal)   |
|--------------------|-------------------|------------------|
| 1.77 mm/s          | 2.27 mm/s         | 2.33 mm/s        |
| 5.8 Hz             | 5.8 Hz            | 11.6 Hz          |
| 35.36% von Limit   | 45.31% von Limit  | 42.98% von Limit |

V-n (Vektorsumme): 2.75 mm/s

SPEKTRALANALYSE - KOMPONENTEN FFT



| Kanal | Spitzwert | Spektrum 25% | Spektrum 50% | Spektrum 75% |
|-------|-----------|--------------|--------------|--------------|
| X     | 1.77 mm/s | 5.4 Hz       | 5.8 Hz       | 10.4 Hz      |
| Y     | 2.27 mm/s | 5.4 Hz       | 5.8 Hz       | 8.5 Hz       |
| Z     | 2.33 mm/s | 10.8 Hz      | 11.9 Hz      | 17.2 Hz      |

SPEKTRALANALYSE - FFT (DIN 4150-3)

