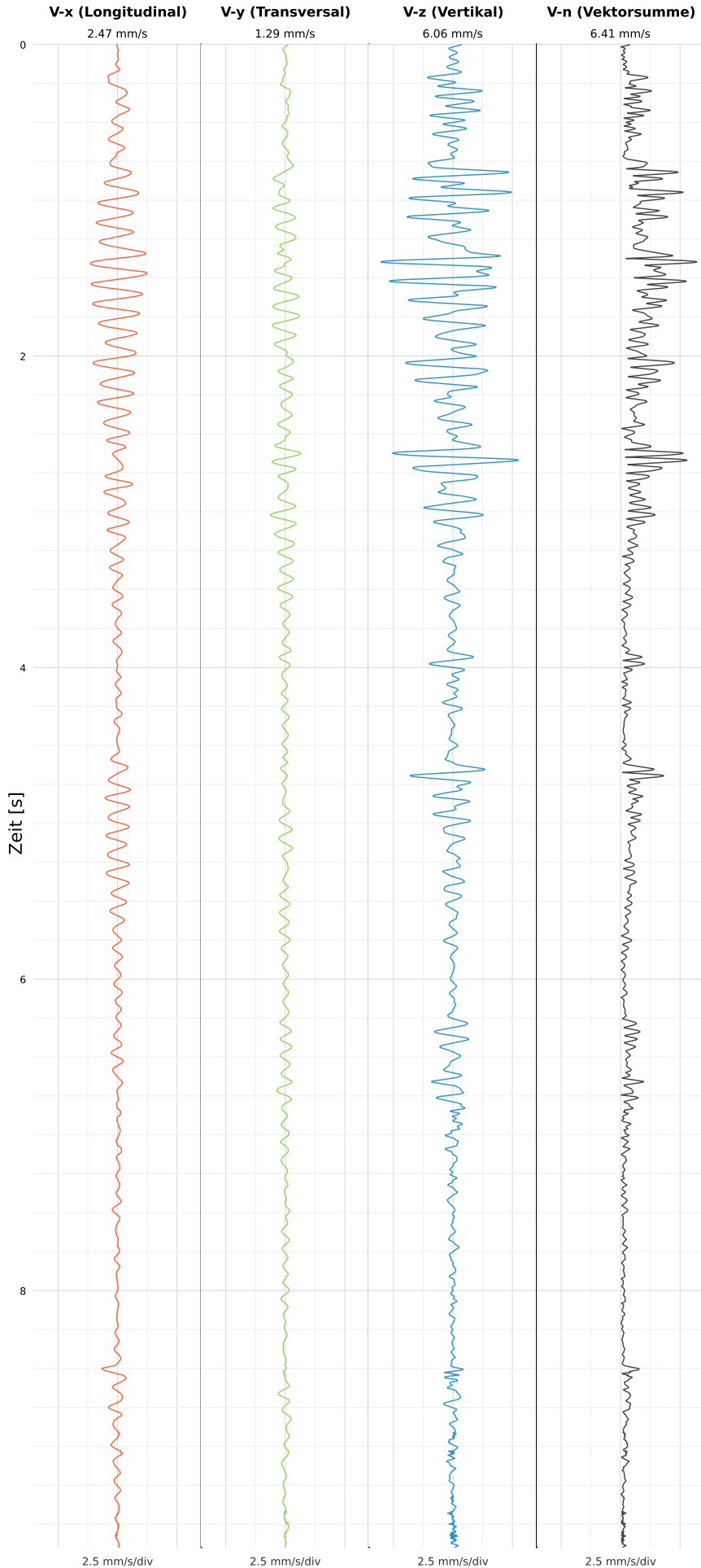


SCHWINGGESCHWINDIGKEIT



DATEI: 2492-PG14-13052026-100512\_raw.csv

Aufzeichnungsdauer: 9.65 s | Abtastrate: 1000 Hz

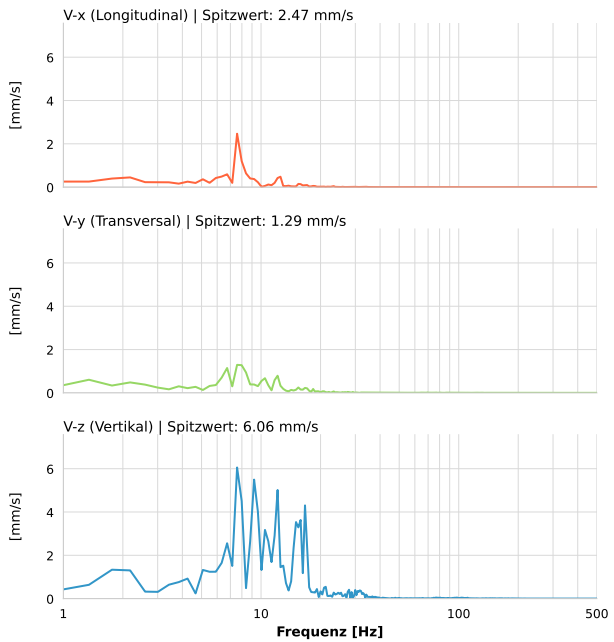
|                  |                           |
|------------------|---------------------------|
| Datum:           | 13.05.2026                |
| Zeit:            | 12:05:12                  |
| Event-ID:        | 2492-PG14-13052026-100512 |
| Kalibrier Datum: | 12.07.2025                |

Spitzwerte

| V-x (Longitudinal) | V-y (Transversal) | V-z (Vertikal)    |
|--------------------|-------------------|-------------------|
| 2.47 mm/s          | 1.29 mm/s         | 6.06 mm/s         |
| 7.9 Hz             | 8.7 Hz            | 8.2 Hz            |
| 49.32% von Limit   | 25.87% von Limit  | 121.13% von Limit |

V-n (Vektorsumme): 6.41 mm/s

SPEKTRALANALYSE - KOMPONENTEN FFT



| Kanal | Spitzwert | Spektrum 25% | Spektrum 50% | Spektrum 75% |
|-------|-----------|--------------|--------------|--------------|
| X     | 2.47 mm/s | 5.9 Hz       | 7.6 Hz       | 10.9 Hz      |
| Y     | 1.29 mm/s | 6.3 Hz       | 8.4 Hz       | 13.0 Hz      |
| Z     | 6.06 mm/s | 8.0 Hz       | 11.7 Hz      | 16.3 Hz      |

SPEKTRALANALYSE - FFT (DIN 4150-3)

