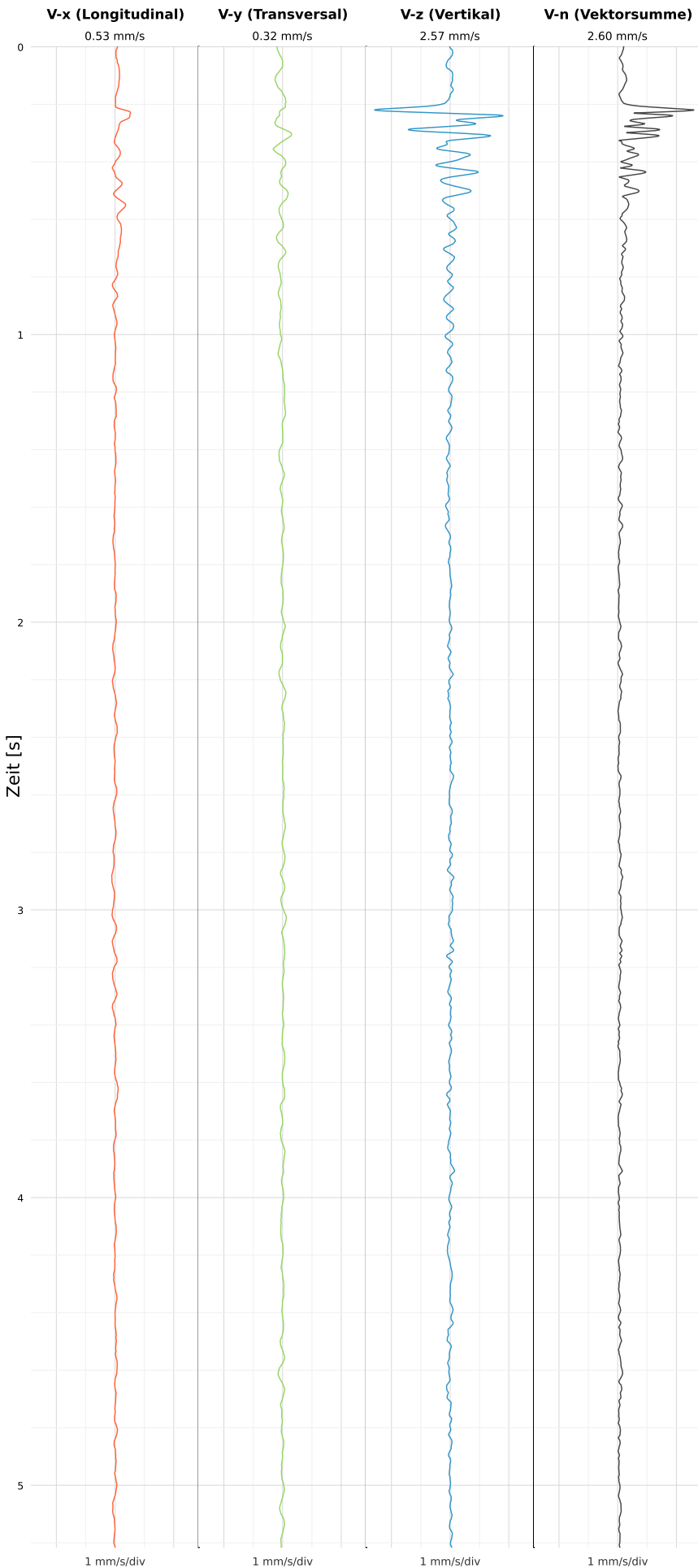


SCHWINGGESCHWINDIGKEIT



DATEI: 2492-PG14-12052026-230924_raw.csv

Aufzeichnungsdauer: 5.22 s | Abtastrate: 1000 Hz

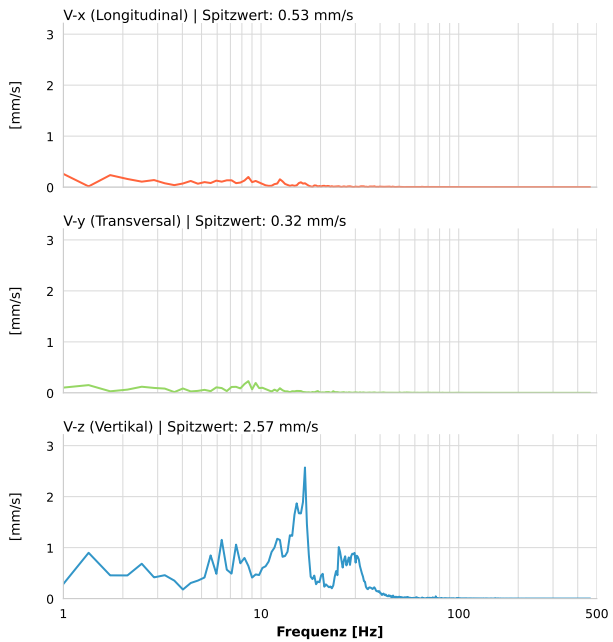
| | |
|------------------|---------------------------|
| Datum: | 13.05.2026 |
| Zeit: | 01:09:24 |
| Event-ID: | 2492-PG14-12052026-230924 |
| Kalibrier Datum: | 12.07.2025 |

Spitzwerte

| V-x (Longitudinal) | V-y (Transversal) | V-z (Vertikal) |
|--------------------|-------------------|------------------|
| 0.53 mm/s | 0.32 mm/s | 2.57 mm/s |
| 0.2 Hz | 0.2 Hz | 16.7 Hz |
| 10.56% von Limit | 6.36% von Limit | 38.56% von Limit |

V-n (Vektorsumme): 2.60 mm/s

SPEKTRALANALYSE - KOMPONENTEN FFT



| Kanal | Spitzwert | Spektrum 25% | Spektrum 50% | Spektrum 75% |
|-------|-----------|--------------|--------------|--------------|
| X | 0.53 mm/s | 2.5 Hz | 8.2 Hz | 16.7 Hz |
| Y | 0.32 mm/s | 4.4 Hz | 9.0 Hz | 19.4 Hz |
| Z | 2.57 mm/s | 11.7 Hz | 16.7 Hz | 27.8 Hz |

SPEKTRALANALYSE - FFT (DIN 4150-3)

