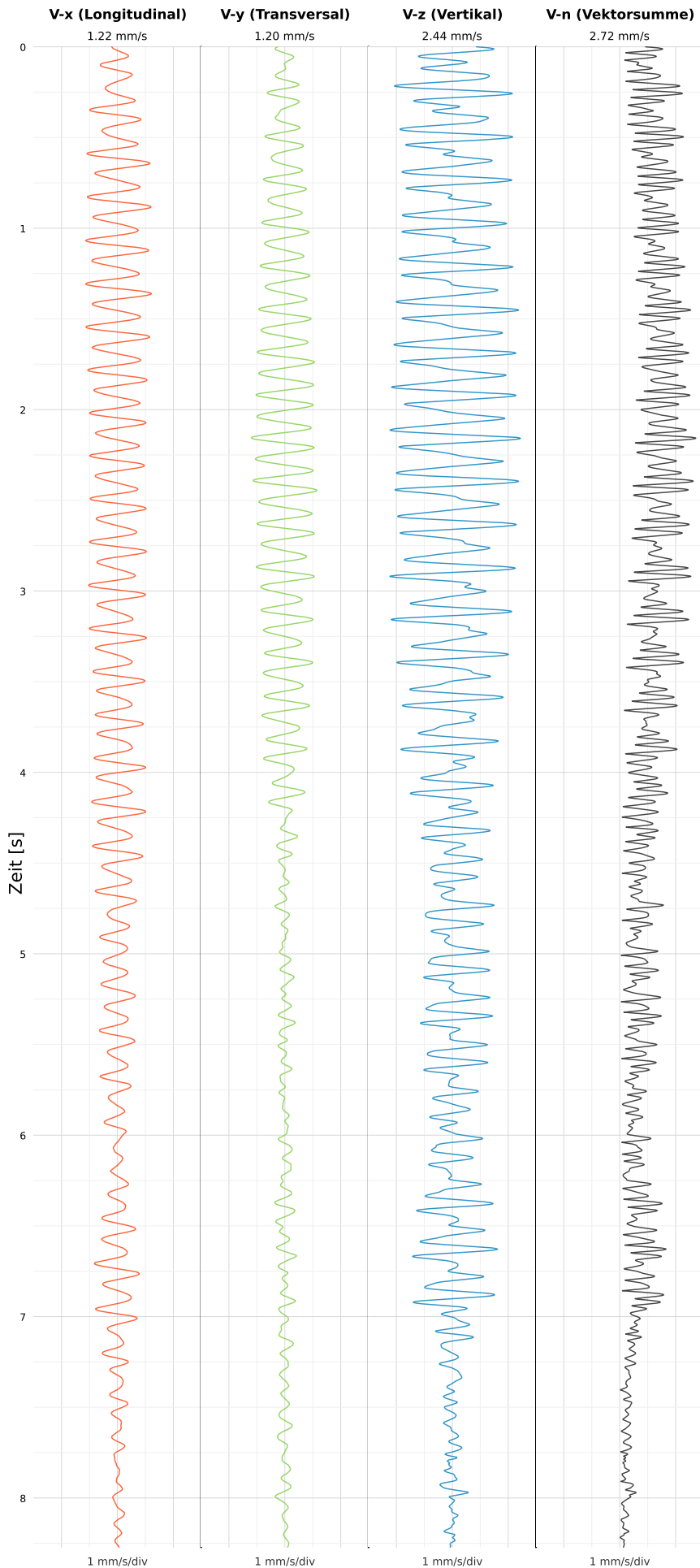


SCHWINGGESCHWINDIGKEIT



DATEI: 2492-PG14-12052026-223726\_raw.csv

Aufzeichnungsdauer: 8.27 s | Abtastrate: 1000 Hz

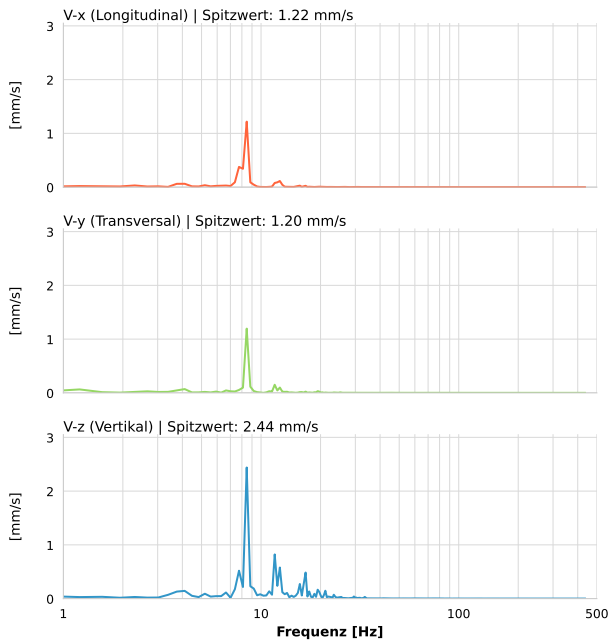
|                  |                           |
|------------------|---------------------------|
| Datum:           | 13.05.2026                |
| Zeit:            | 00:37:26                  |
| Event-ID:        | 2492-PG14-12052026-223726 |
| Kalibrier Datum: | 12.07.2025                |

Spitzwerte

| V-x (Longitudinal) | V-y (Transversal) | V-z (Vertikal)   |
|--------------------|-------------------|------------------|
| 1.22 mm/s          | 1.20 mm/s         | 2.44 mm/s        |
| 8.3 Hz             | 8.5 Hz            | 8.5 Hz           |
| 24.38% von Limit   | 23.91% von Limit  | 48.80% von Limit |

V-n (Vektorsumme): 2.72 mm/s

SPEKTRALANALYSE - KOMPONENTEN FFT



| Kanal | Spitzwert | Spektrum 25% | Spektrum 50% | Spektrum 75% |
|-------|-----------|--------------|--------------|--------------|
| X     | 1.22 mm/s | 7.7 Hz       | 8.5 Hz       | 11.4 Hz      |
| Y     | 1.20 mm/s | 8.5 Hz       | 8.5 Hz       | 12.5 Hz      |
| Z     | 2.44 mm/s | 8.5 Hz       | 11.7 Hz      | 16.8 Hz      |

SPEKTRALANALYSE - FFT (DIN 4150-3)

