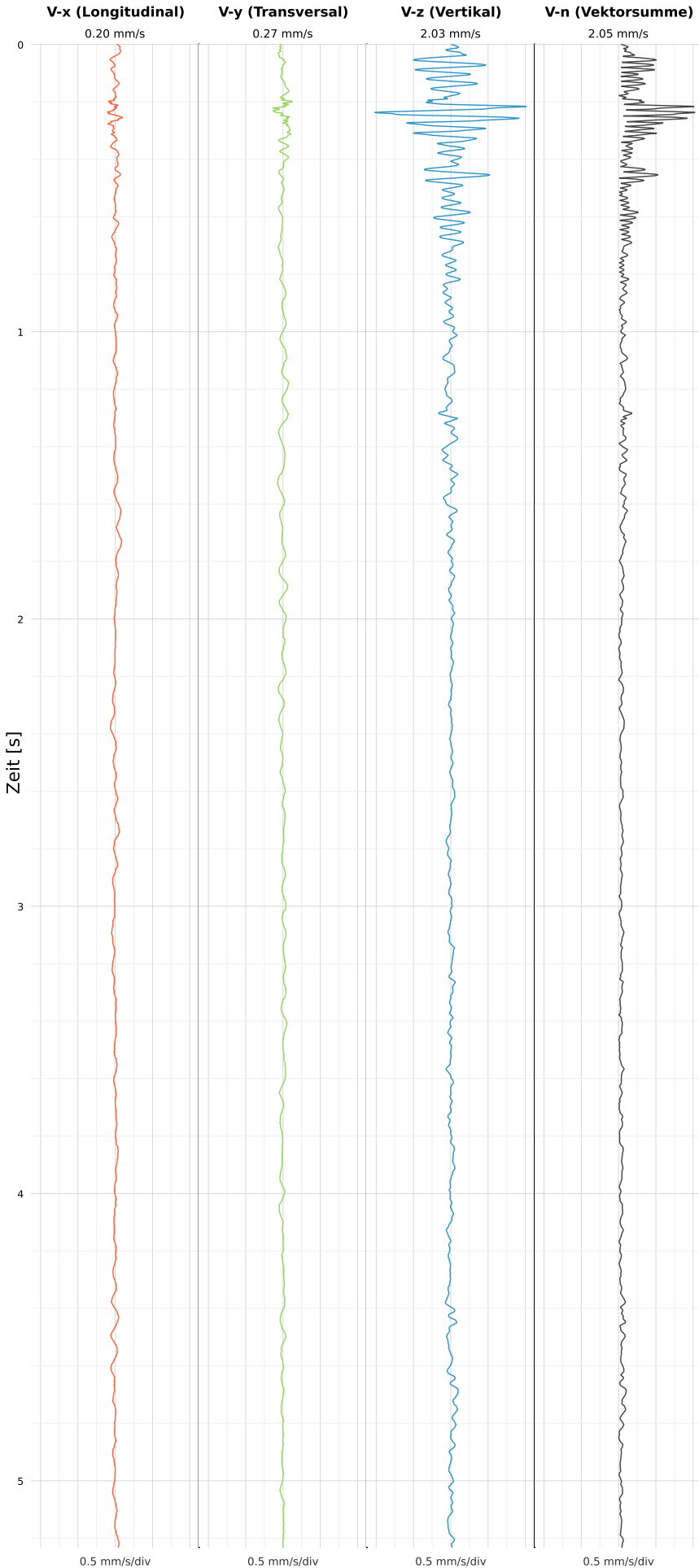


SCHWINGGESCHWINDIGKEIT



DATEI: 2492-PG14-12052026-223520_raw.csv

Aufzeichnungsdauer: 5.23 s | Abtastrate: 1000 Hz

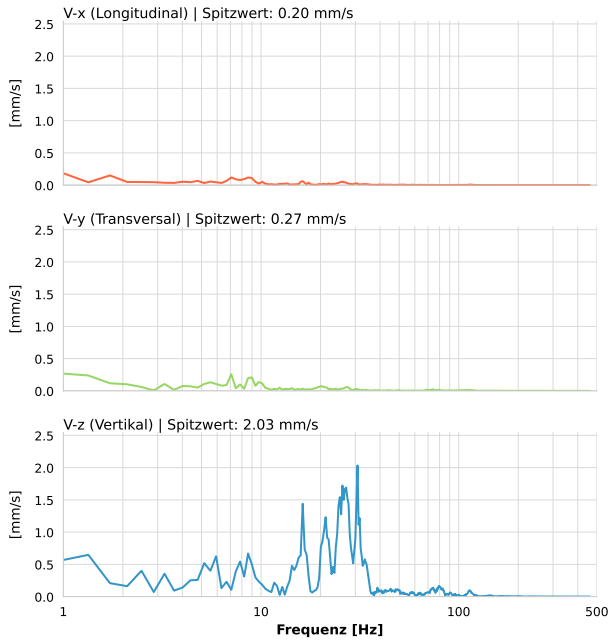
| | |
|------------------|---------------------------|
| Datum: | 13.05.2026 |
| Zeit: | 00:35:20 |
| Event-ID: | 2492-PG14-12052026-223520 |
| Kalibrier Datum: | 12.07.2025 |

Spitzwerte

| V-x (Longitudinal) | V-y (Transversal) | V-z (Vertikal) |
|--------------------|-------------------|------------------|
| 0.20 mm/s | 0.27 mm/s | 2.03 mm/s |
| 1.0 Hz | 9.9 Hz | 30.8 Hz |
| 4.10% von Limit | 5.44% von Limit | 19.95% von Limit |

V-n (Vektorsumme): 2.05 mm/s

SPEKTRALANALYSE - KOMPONENTEN FFT



| Kanal | Spitzwert | Spektrum 25% | Spektrum 50% | Spektrum 75% |
|-------|-----------|--------------|--------------|--------------|
| X | 0.20 mm/s | 5.5 Hz | 14.7 Hz | 33.8 Hz |
| Y | 0.27 mm/s | 6.7 Hz | 18.2 Hz | 68.2 Hz |
| Z | 2.03 mm/s | 20.5 Hz | 26.9 Hz | 33.4 Hz |

SPEKTRALANALYSE - FFT (DIN 4150-3)

