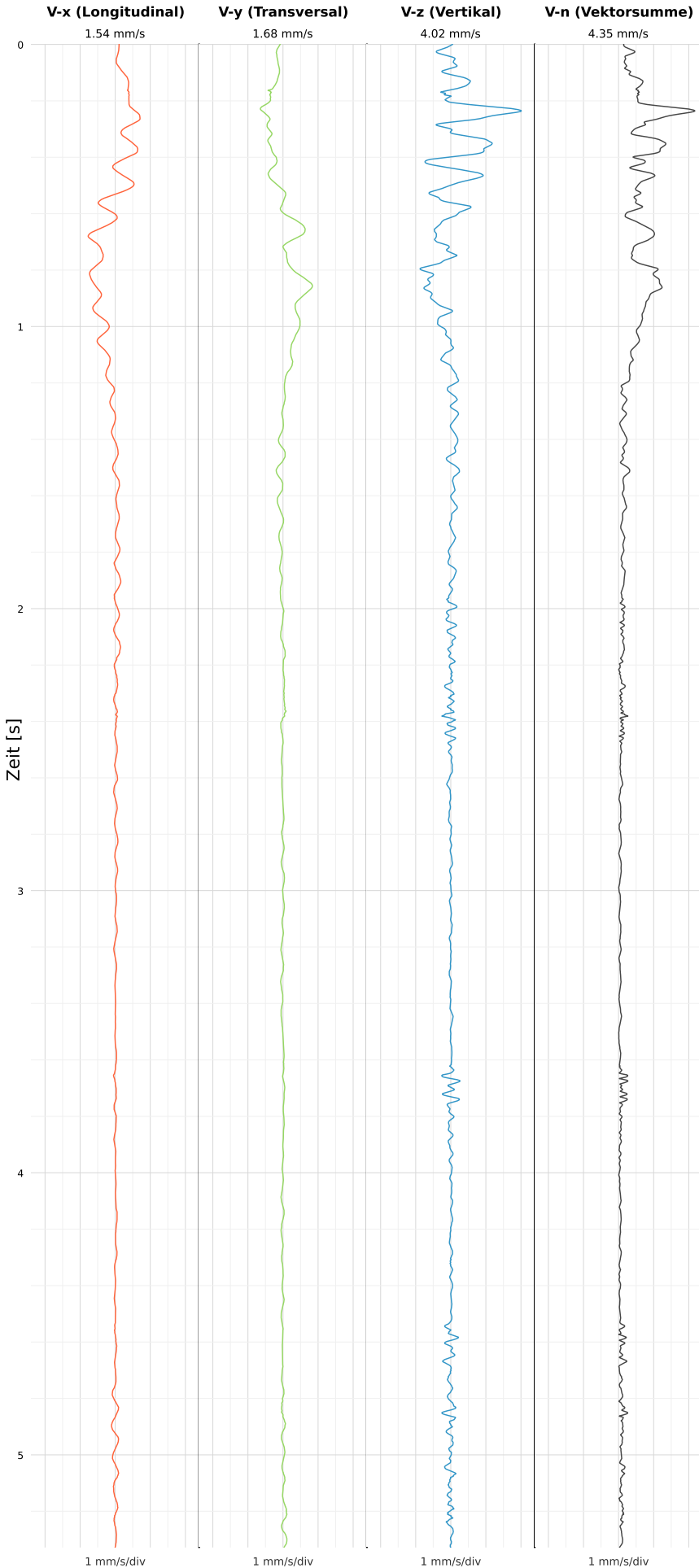


SCHWINGGESCHWINDIGKEIT



DATEI: 2492-PG14-12052026-203735_raw.csv

Aufzeichnungsdauer: 5.33 s | Abtastrate: 1000 Hz

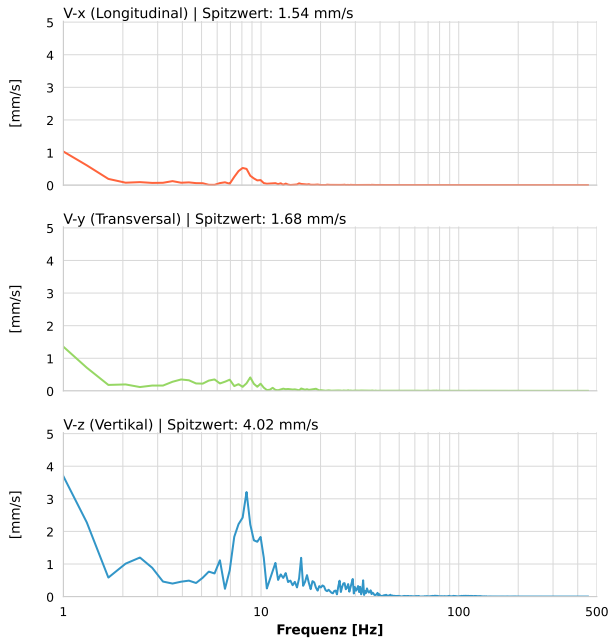
| | |
|------------------|---------------------------|
| Datum: | 12.05.2026 |
| Zeit: | 22:37:35 |
| Event-ID: | 2492-PG14-12052026-203735 |
| Kalibrier Datum: | 12.07.2025 |

Spitzwerte

| V-x (Longitudinal) | V-y (Transversal) | V-z (Vertikal) |
|--------------------|-------------------|------------------|
| 1.54 mm/s | 1.68 mm/s | 4.02 mm/s |
| 0.6 Hz | 0.8 Hz | 0.8 Hz |
| 30.88% von Limit | 33.52% von Limit | 80.46% von Limit |

V-n (Vektorsumme): 4.35 mm/s

SPEKTRALANALYSE - KOMPONENTEN FFT



| Kanal | Spitzwert | Spektrum 25% | Spektrum 50% | Spektrum 75% |
|-------|-----------|--------------|--------------|--------------|
| X | 1.54 mm/s | 0.9 Hz | 3.9 Hz | 8.8 Hz |
| Y | 1.68 mm/s | 0.9 Hz | 4.7 Hz | 9.2 Hz |
| Z | 4.02 mm/s | 5.1 Hz | 9.2 Hz | 18.2 Hz |

SPEKTRALANALYSE - FFT (DIN 4150-3)

