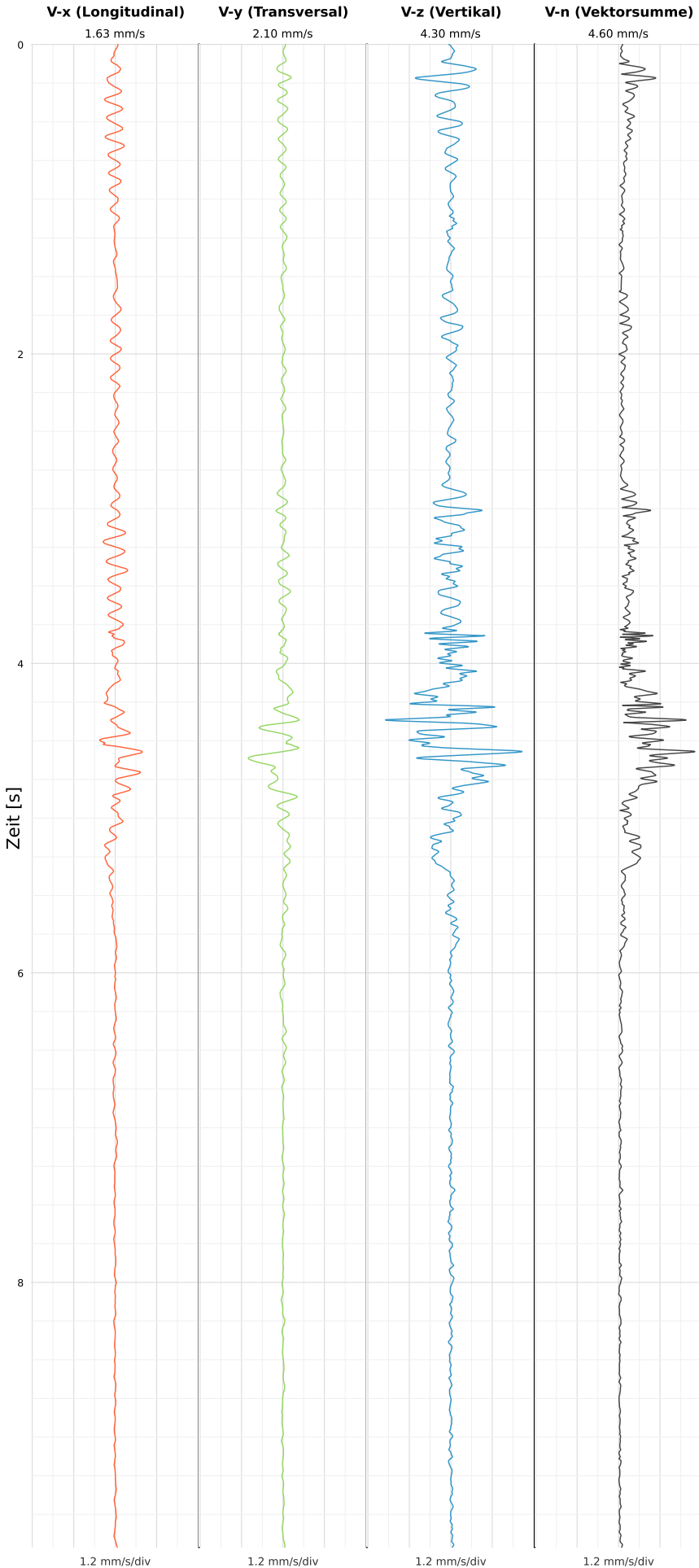


SCHWINGGESCHWINDIGKEIT



DATEI: 2492-PG14-12052026-203256\_raw.csv

Aufzeichnungsdauer: 9.71 s | Abtastrate: 1000 Hz

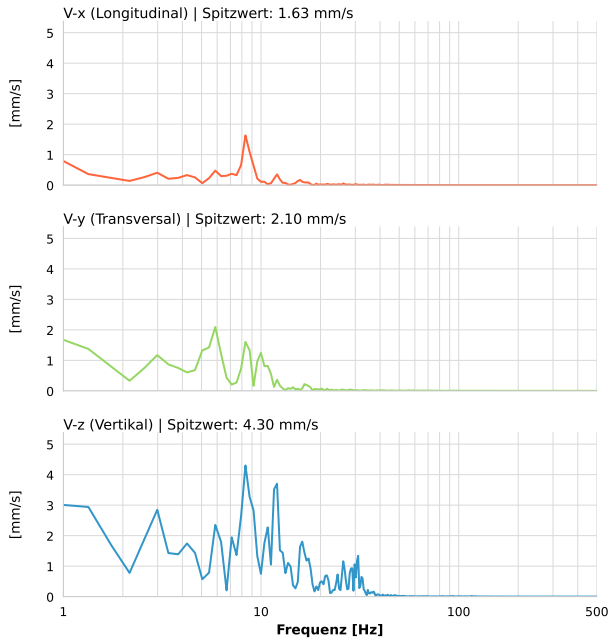
|                  |                           |
|------------------|---------------------------|
| Datum:           | 12.05.2026                |
| Zeit:            | 22:32:56                  |
| Event-ID:        | 2492-PG14-12052026-203256 |
| Kalibrier Datum: | 12.07.2025                |

Spitzwerte

| V-x (Longitudinal) | V-y (Transversal) | V-z (Vertikal)   |
|--------------------|-------------------|------------------|
| 1.63 mm/s          | 2.10 mm/s         | 4.30 mm/s        |
| 8.4 Hz             | 5.9 Hz            | 8.4 Hz           |
| 32.62% von Limit   | 41.91% von Limit  | 86.02% von Limit |

V-n (Vektorsumme): 4.60 mm/s

SPEKTRALANALYSE - KOMPONENTEN FFT



| Kanal | Spitzwert | Spektrum 25% | Spektrum 50% | Spektrum 75% |
|-------|-----------|--------------|--------------|--------------|
| X     | 1.63 mm/s | 3.4 Hz       | 8.3 Hz       | 10.0 Hz      |
| Y     | 2.10 mm/s | 3.0 Hz       | 5.9 Hz       | 10.0 Hz      |
| Z     | 4.30 mm/s | 6.3 Hz       | 10.8 Hz      | 18.6 Hz      |

SPEKTRALANALYSE - FFT (DIN 4150-3)

