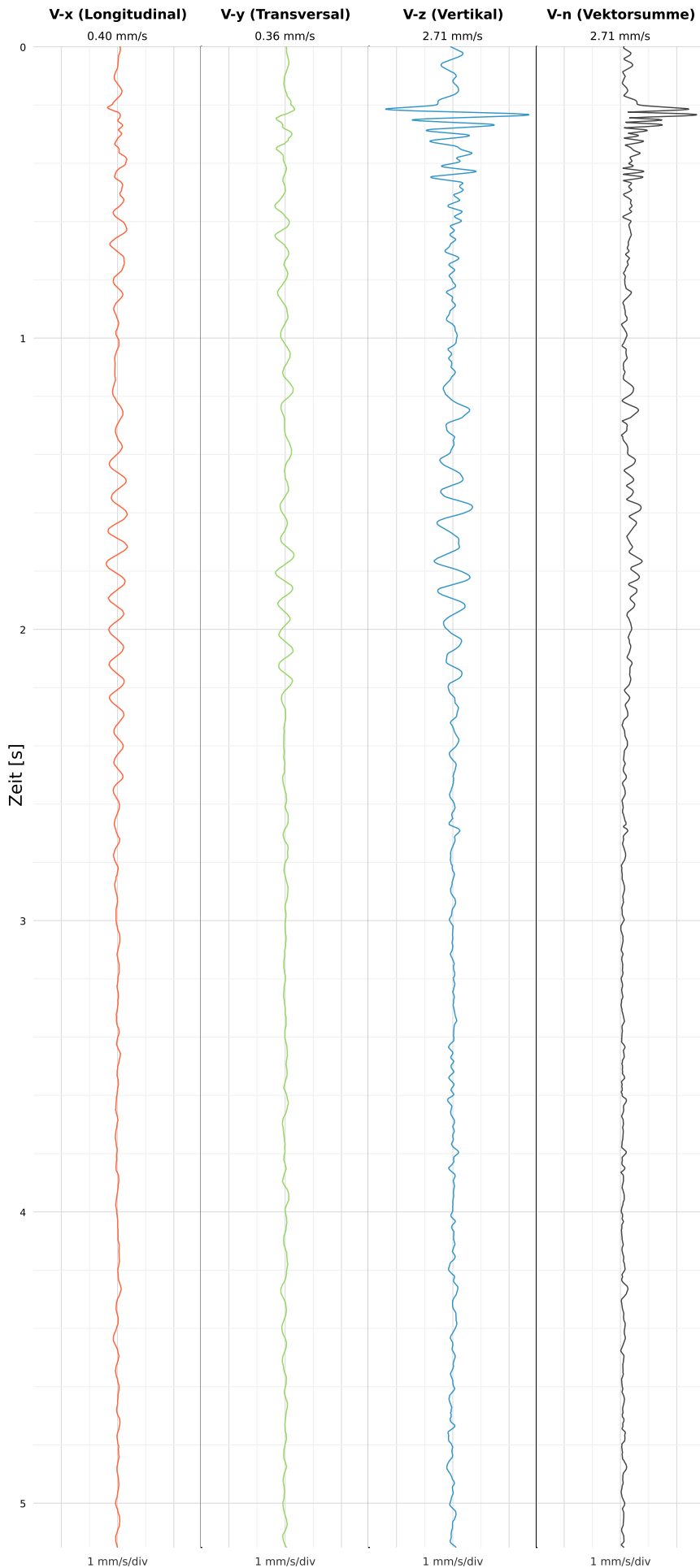


SCHWINGGESCHWINDIGKEIT



DATEI: 2492-PG14-12052026-202429_raw.csv

Aufzeichnungsdauer: 5.15 s | Abtastrate: 1000 Hz

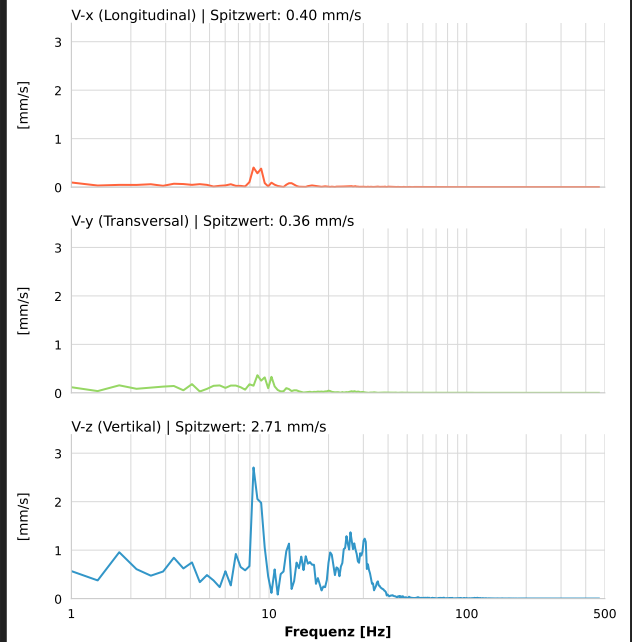
| | |
|------------------|---------------------------|
| Datum: | 12.05.2026 |
| Zeit: | 22:24:29 |
| Event-ID: | 2492-PG14-12052026-202429 |
| Kalibrier Datum: | 12.07.2025 |

Spitzwerte

| V-x (Longitudinal) | V-y (Transversal) | V-z (Vertikal) |
|--------------------|-------------------|------------------|
| 0.40 mm/s | 0.36 mm/s | 2.71 mm/s |
| 8.9 Hz | 8.9 Hz | 8.9 Hz |
| 8.09% von Limit | 7.29% von Limit | 54.11% von Limit |

V-n (Vektorsumme): 2.71 mm/s

SPEKTRALANALYSE - KOMPONENTEN FFT



| Kanal | Spitzwert | Spektrum 25% | Spektrum 50% | Spektrum 75% |
|-------|-----------|--------------|--------------|--------------|
| X | 0.40 mm/s | 7.2 Hz | 9.1 Hz | 16.9 Hz |
| Y | 0.36 mm/s | 5.2 Hz | 9.1 Hz | 13.4 Hz |
| Z | 2.71 mm/s | 9.1 Hz | 20.8 Hz | 28.5 Hz |

SPEKTRALANALYSE - FFT (DIN 4150-3)

