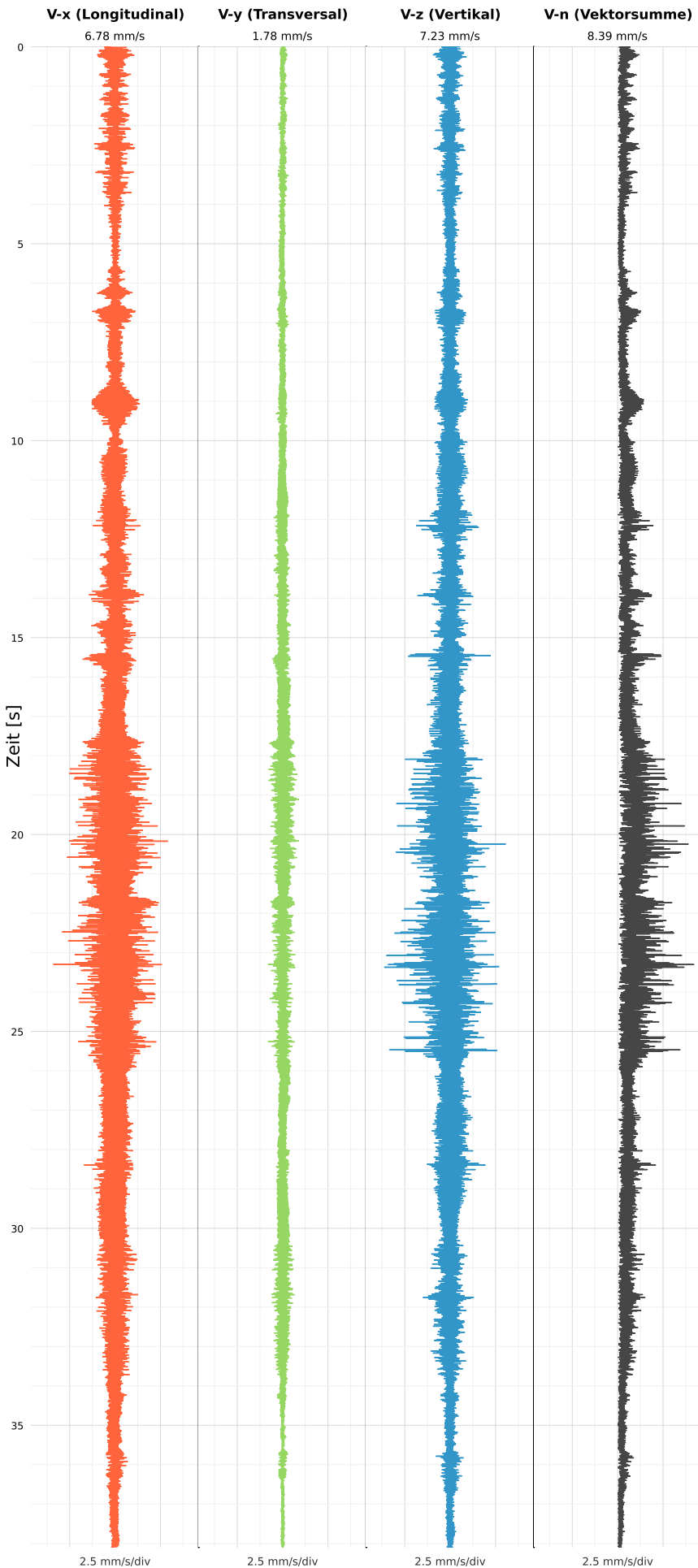


SCHWINGGESCHWINDIGKEIT



DATEI: 2492-PG14-09062026-072934_raw.csv

Aufzeichnungsdauer: 38.10 s | Abtastrate: 1000 Hz

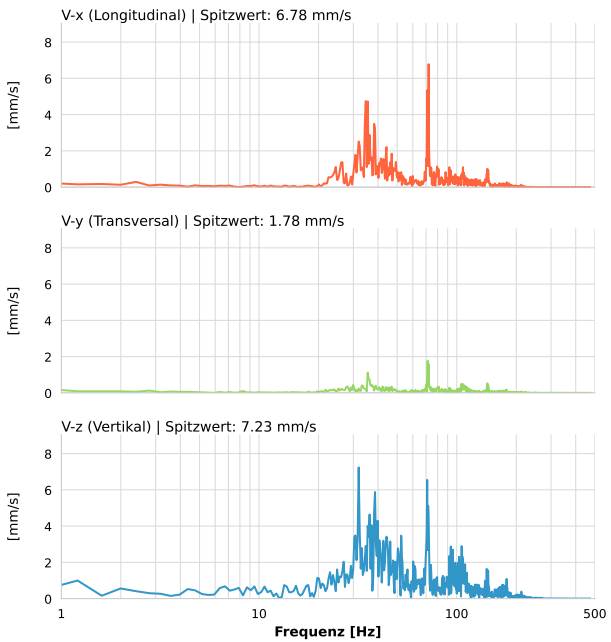
| | |
|------------------|---------------------------|
| Datum: | 09.06.2026 |
| Zeit: | 07:29:34 |
| Event-ID: | 2492-PG14-09062026-072934 |
| Kalibrier Datum: | 12.07.2025 |

Spitzwerte

| V-x (Longitudinal) | V-y (Transversal) | V-z (Vertikal) |
|--------------------|-------------------|------------------|
| 6.78 mm/s | 1.78 mm/s | 7.23 mm/s |
| 71.5 Hz | 71.5 Hz | 71.1 Hz |
| 39.55% von Limit | 10.35% von Limit | 42.27% von Limit |

V-n (Vektorsumme): 8.39 mm/s

SPEKTRALANALYSE - KOMPONENTEN FFT



| Kanal | Spitzwert | Spektrum 25% | Spektrum 50% | Spektrum 75% |
|-------|-----------|--------------|--------------|--------------|
| X | 6.78 mm/s | 38.2 Hz | 70.1 Hz | 100.4 Hz |
| Y | 1.78 mm/s | 42.2 Hz | 76.8 Hz | 115.8 Hz |
| Z | 7.23 mm/s | 38.6 Hz | 68.5 Hz | 105.9 Hz |

SPEKTRALANALYSE - FFT (DIN 4150-3)

