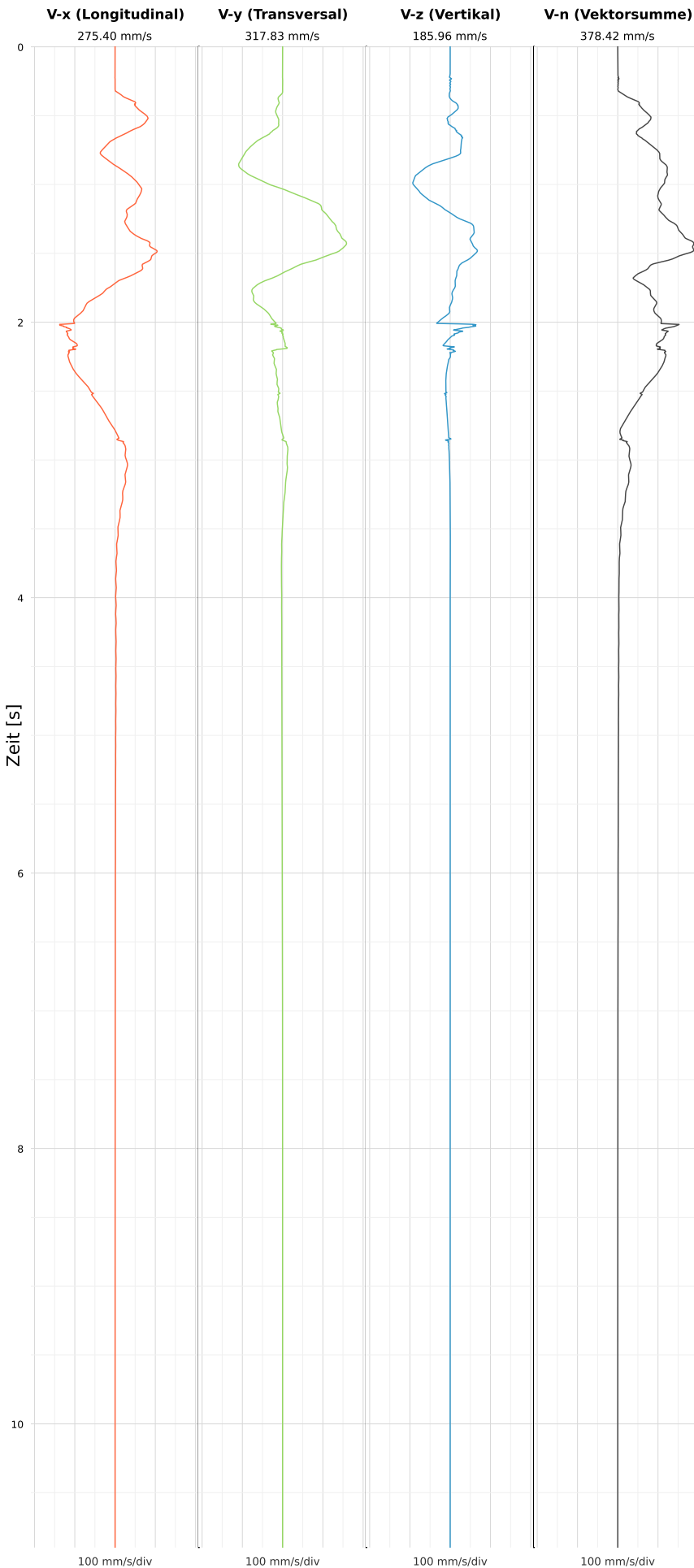


SCHWINGGESCHWINDIGKEIT



DATEI: 2492-PG14-05062026-151716\_raw.csv

Aufzeichnungsdauer: 10.90 s | Abtastrate: 1000 Hz

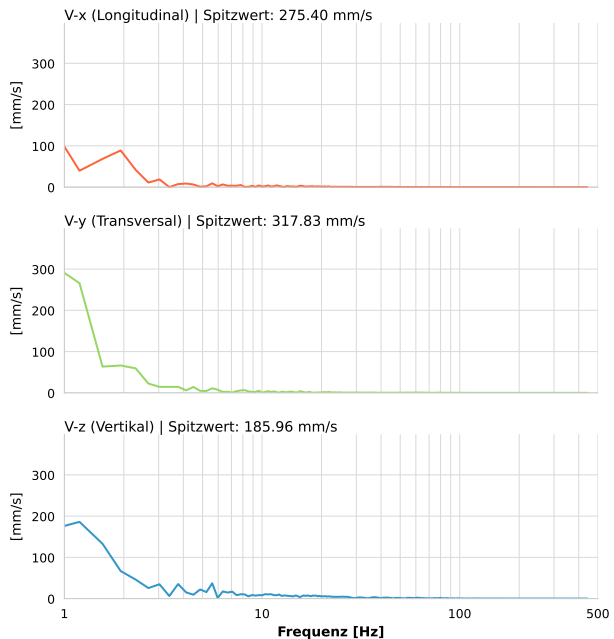
|                  |                           |
|------------------|---------------------------|
| Datum:           | 05.06.2026                |
| Zeit:            | 15:17:16                  |
| Event-ID:        | 2492-PG14-05062026-151716 |
| Kalibrier Datum: | 12.07.2025                |

Spitzwerte

| V-x (Longitudinal) | V-y (Transversal)  | V-z (Vertikal)     |
|--------------------|--------------------|--------------------|
| 275.40 mm/s        | 317.83 mm/s        | 185.96 mm/s        |
| 0.4 Hz             | 0.6 Hz             | 1.2 Hz             |
| 5508.10% von Limit | 6356.52% von Limit | 3719.20% von Limit |

V-n (Vektorsumme): 378.42 mm/s

SPEKTRALANALYSE - KOMPONENTEN FFT



| Kanal | Spitzwert   | Spektrum 25% | Spektrum 50% | Spektrum 75% |
|-------|-------------|--------------|--------------|--------------|
| X     | 275.40 mm/s | 0.5 Hz       | 0.8 Hz       | 2.7 Hz       |
| Y     | 317.83 mm/s | 0.8 Hz       | 1.2 Hz       | 2.3 Hz       |
| Z     | 185.96 mm/s | 1.2 Hz       | 3.8 Hz       | 19.2 Hz      |

SPEKTRALANALYSE - FFT (DIN 4150-3)

