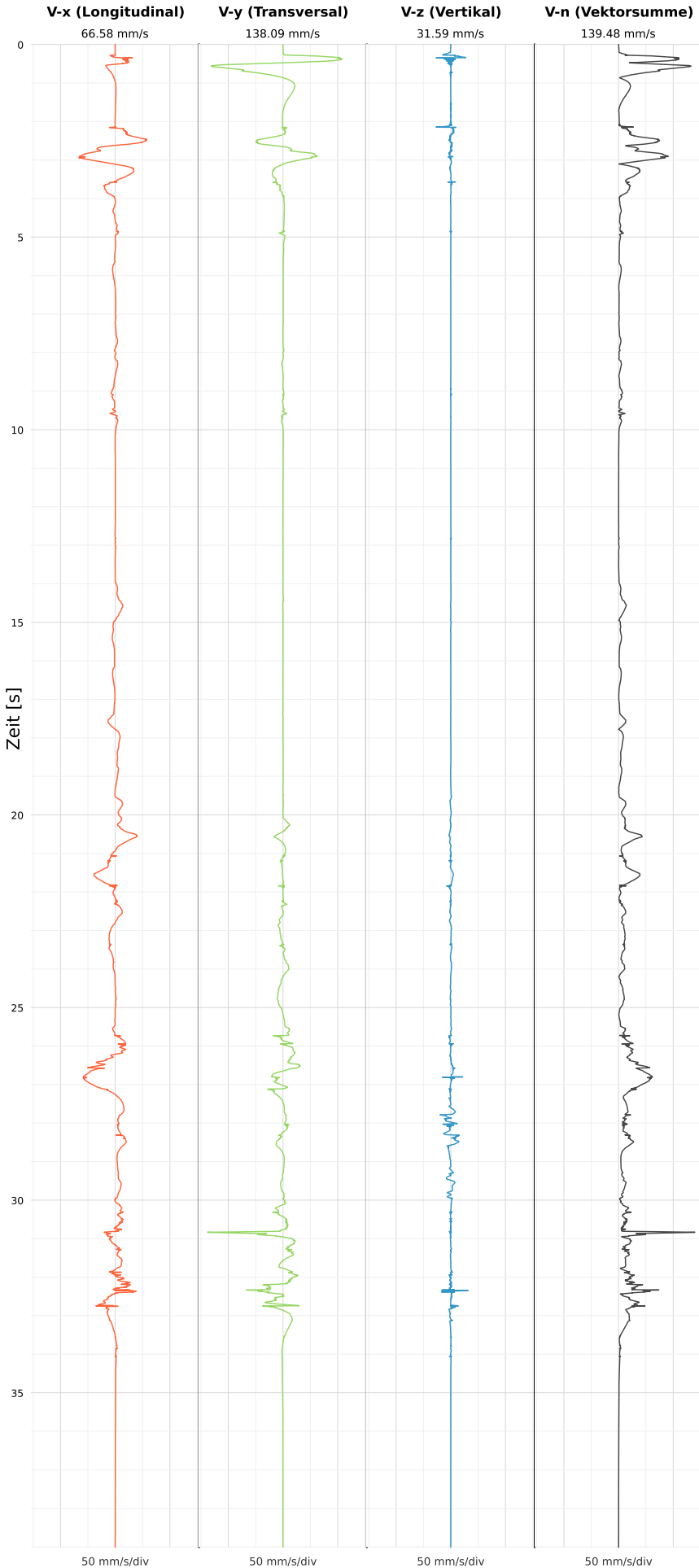


SCHWINGGESCHWINDIGKEIT



DATEI: 2492-PG14-02062026-194020_raw.csv

Aufzeichnungsdauer: 39.01 s | Abtastrate: 1000 Hz

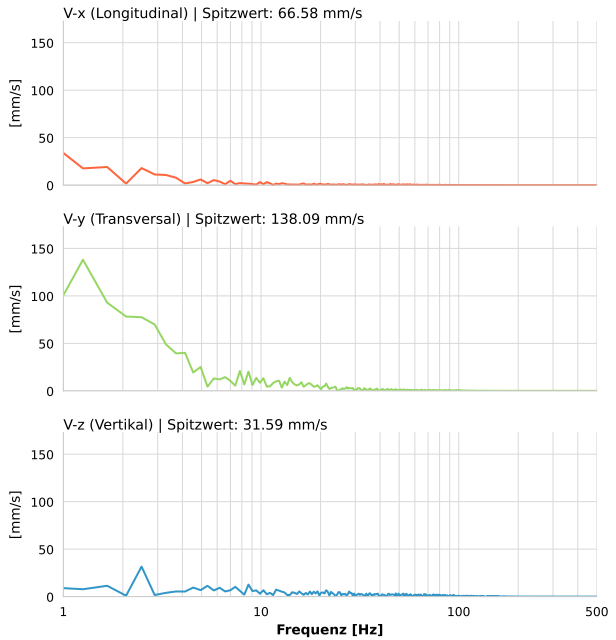
| | |
|------------------|---------------------------|
| Datum: | 02.06.2026 |
| Zeit: | 19:40:20 |
| Event-ID: | 2492-PG14-02062026-194020 |
| Kalibrier Datum: | 12.07.2025 |

Spitzwerte

| V-x (Longitudinal) | V-y (Transversal) | V-z (Vertikal) |
|--------------------|--------------------|-------------------|
| 66.58 mm/s | 138.09 mm/s | 31.59 mm/s |
| 0.5 Hz | 1.1 Hz | 2.6 Hz |
| 1331.61% von Limit | 2761.83% von Limit | 631.76% von Limit |

V-n (Vektorsumme): 139.48 mm/s

SPEKTRALANALYSE - KOMPONENTEN FFT



| Kanal | Spitzwert | Spektrum 25% | Spektrum 50% | Spektrum 75% |
|-------|-------------|--------------|--------------|--------------|
| X | 66.58 mm/s | 0.8 Hz | 2.9 Hz | 18.5 Hz |
| Y | 138.09 mm/s | 1.7 Hz | 3.7 Hz | 14.0 Hz |
| Z | 31.59 mm/s | 8.6 Hz | 27.5 Hz | 66.9 Hz |

SPEKTRALANALYSE - FFT (DIN 4150-3)

