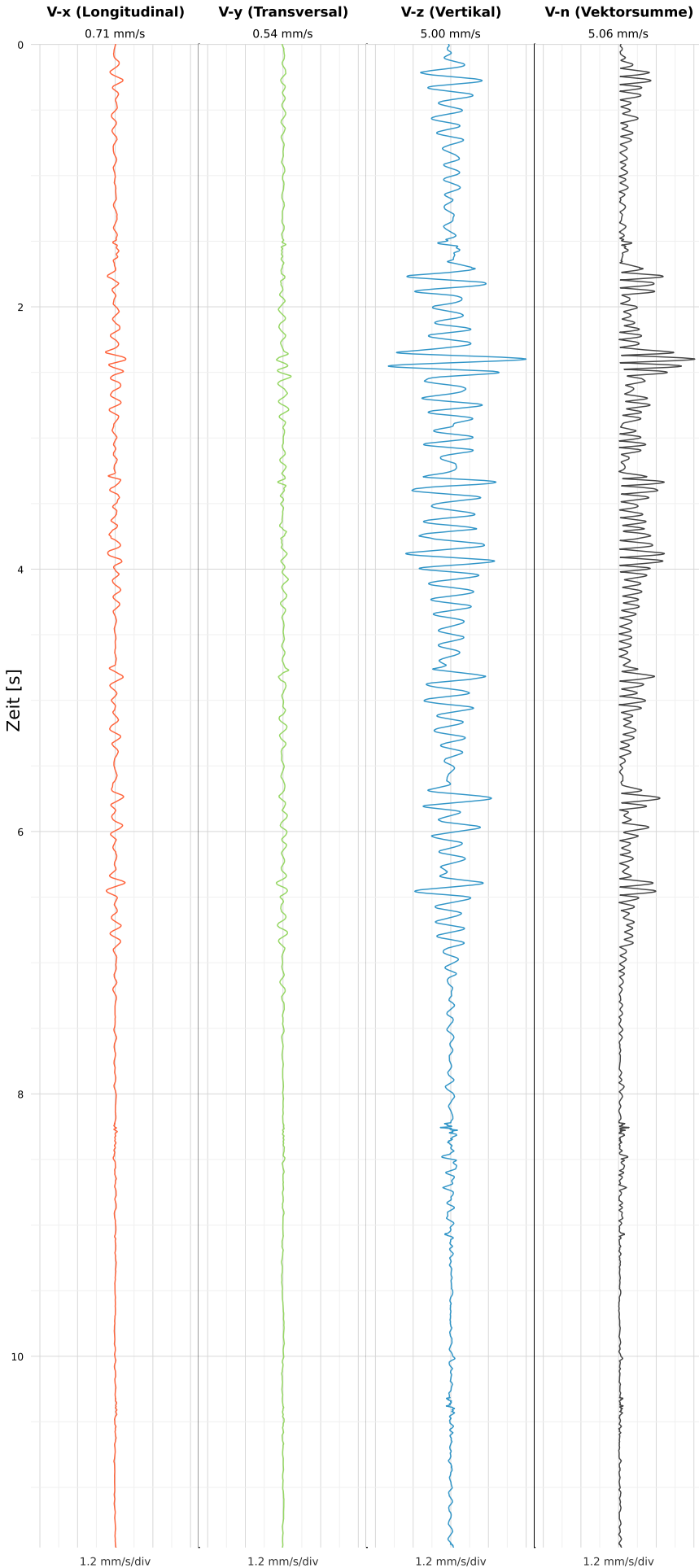


## SCHWINGGESCHWINDIGKEIT



DATEI: 2434-05062026-001514\_raw.csv

Aufzeichnungsdauer: 11.46 s | Abtastrate: 1000 Hz

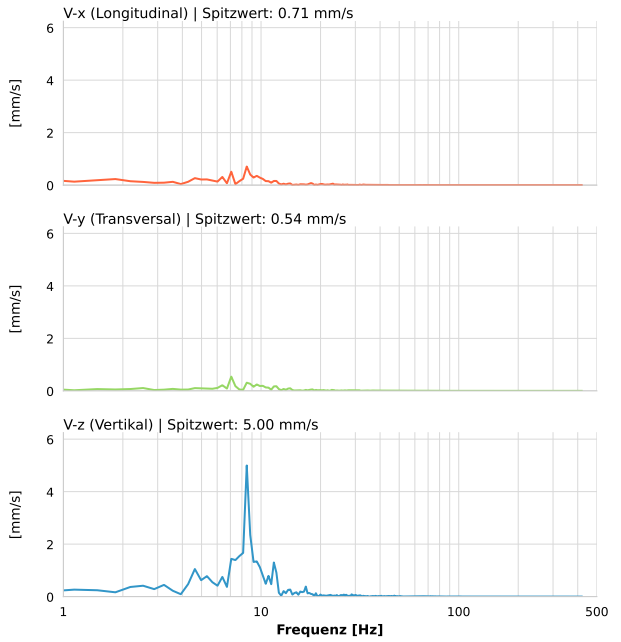
|                  |                      |
|------------------|----------------------|
| Datum:           | 05.06.2026           |
| Zeit:            | 00:15:14             |
| Event-ID:        | 2434-05062026-001514 |
| Kalibrier Datum: | 10.07.2025           |

### Spitzwerte

| V-x (Longitudinal) | V-y (Transversal) | V-z (Vertikal)   |
|--------------------|-------------------|------------------|
| 0.71 mm/s          | 0.54 mm/s         | 5.00 mm/s        |
| 9.0 Hz             | 9.0 Hz            | 8.5 Hz           |
| 14.16% von Limit   | 10.85% von Limit  | 99.94% von Limit |

V-n (Vektorsumme): 5.06 mm/s

### SPEKTRALANALYSE - KOMPONENTEN FFT



| Kanal | Spitzwert | Spektrum 25% | Spektrum 50% | Spektrum 75% |
|-------|-----------|--------------|--------------|--------------|
| X     | 0.71 mm/s | 5.3 Hz       | 8.5 Hz       | 12.0 Hz      |
| Y     | 0.54 mm/s | 7.1 Hz       | 9.5 Hz       | 15.8 Hz      |
| Z     | 5.00 mm/s | 7.1 Hz       | 8.5 Hz       | 11.6 Hz      |

### SPEKTRALANALYSE - FFT (DIN 4150-3)

